



## **On-line PICASSO PROJECT**

**Comprehensive Catalogue Raisonné  
Prof. Dr. Enrique Mallen**

**1932**



**Le viol.** Paris. 21-November/1932. Drypoint. 17,6 x 12,7 cm.  
Musée Picasso, Paris. Dation 1979.

**OPP.32:322**; Ba:264.3; MPP:2204; LO.18\*:218p; PA.17a\*:148

**Femme assise et tête d'homme à barbe.**  
Boisgeloup. Early/1932. Ink & pencil on paper  
[cardboard]. 27,5 x 25,5 cm. Museum Ludwig,  
Köln. (Inv ML/Z 2001/050). Schenkung 2001.  
Formerly Walter Bareiss Collection, NY.

**OPP.32:018**; P.IV:311; PP.32:019a;  
AB.46:172p; RR.70:350; UP.00:637;  
WO.92\*:33; WR.96:350p; WS.11:81p





**Les amants.** Boisgeloup. Early/1932. Oil on canvas. 98,1 x 131,2 cm. Sotheby's. #29, N08314, 05/08/07. Formerly Christie's. #45, 9516, 11/08/00.

**OPP.32:027**; PP.32:176; Z.VIII:67; PA.17a:158p

---

**Femme à la fleur.** Boisgeloup. [Early/1932]. Charcoal on canvas. 162 x 130 cm. Fundación Almine & Bernard Ruiz-Picasso para el Arte.

**OPP.32:186**; LO.18\*:163p; MG.04c\*:14; PA.17a\*:40





**La lecture (Marie-Thérèse).** [Boisgeloup]. [Early]/1932. Oil on canvas. 97 x 73 cm. Private collection, New York.

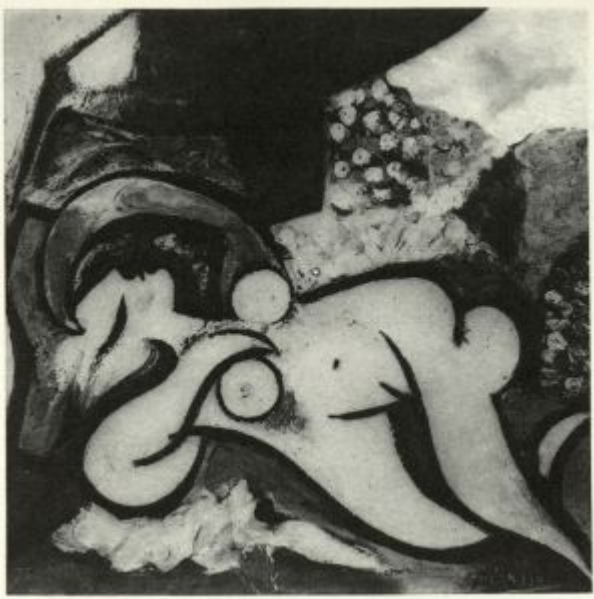
**OPP.32:191**; P.IV:305; PA.17a:156p

---

**Le peintre.** Boisgeloup. [Early]/1932. Pen & ink on paper. 32,5 x 32 cm. Private collection.

**OPP.32:361**; PP.32:032; Z.VII:371





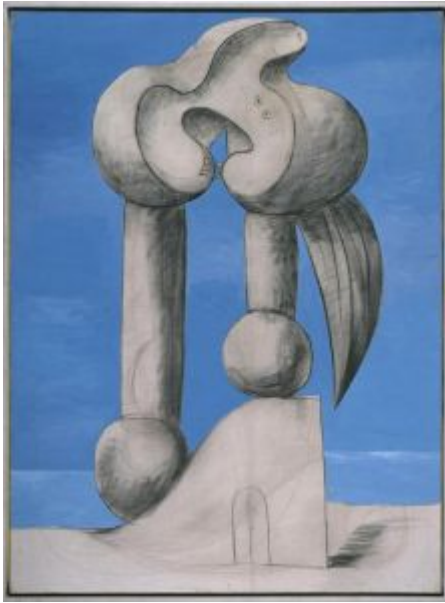
**Nu couché.** Paris. [Early]/1932. Oil on canvas [OiC]. 41 x 41 cm. Private collection.

**OPP.32:364**; PP.32:034; Z.VII:384

**La lecture (Marie-Thérèse).** Boisgeloup. 2-January/1932. Oil on canvas. 130 x 97,5 cm. Musée Picasso, Paris. Dation 1979.

**OPP.32:012**; MPP:137; P.IV:297; PP.32:001; Z.VII:358; AB.12\*:177p; AU.89\*:29; BD.06\*:n/a; BD.16\*:55; BE.09:131p; BJ.19\*:n/a; BJ.19\*:n/a; DA.03:59; FS.82:18p; GA.14:91p; GP.32\*:207; GP.96:191p; IS.98:94p; KZ.32\*:204; LM.06:51; LN.80:20; LO.18\*:46p; LP.99:127p; MA.08a\*:n/a; MG.03b\*:22; MM.04\*:83p; MN.80\*:n/a; MP.85:115; MS.04\*:n/a; ND.01\*:23; PA.17a\*:3; PA.37a\*:4; PA.79a\*:212; PD.09:259p; SY.11\*:n/a; TK.04\*:n/a; TO.14:65p; UP.00:640; WR.80\*:294p; WW.91:345p





**Figures au bord de la mer I.** Boisgeloup. [Winter/1932~1933]  
2-January/1932. Oil & charcoal on canvas. 130 x 97 cm. Museo  
Nacional Centro de Arte Reina Sofia, Madrid. (Inv DE.01163).

**OPP.32:127**; P.IV:296; PP.32:177; HN.00\*:110; IC.05\*:67;  
JC.01a\*:125; LO.18\*:45p; MA.17\*:81p; PA.17a\*:2; TG.94\*:94;  
YB.08\*:26

**La ceinture jaune (Marie-Thérèse).** Boisgeloup. 6-  
January/1932. Oil on canvas. 130 x 97 cm. Helly Nahmad  
Collection, Monaco/London. Formerly Loudmer. #63,  
11/25/90.

**OPP.32:017**; P.IV:301; PP.32:013; Z.VII:357;  
CB.11\*:163p; FC.08\*:14; GP.32\*:208; HN.13\*:159p;  
KZ.32\*:205; LO.18\*:47p; LO.98b\*:n/a; PA.17a\*:4;  
RT.99\*:34; TB.10\*:69





**La lecture interrompue (Marie-Thérèse).** Boisgeloup. 9-January/1932. Oil on panel. 65,5 x 51 cm. Private collection. Formerly Sotheby's. #8, L11002, 02/08/11; Mr. & Mrs. James W. Alsdorf Collection, Chicago.

**OPP.32:025**; P.IV:298; PP.32:002; Z.VII:363; GP.32\*:197; JL.71:78p; KZ.32\*:202a; LA.45a\*:n/a; LN.80:16; LO.18\*:48p; NY.40j\*:n/a; PA.17a:26p; RP.11:63p; WA.65a\*:21; WR.80\*:292p

---

**Portrait de Marie-Thérèse Walter.** Boisgeloup. 9-January/1932. Oil on canvas. 33 x 24 cm. Sotheby's. #7, N09139, 05/07/14. Formerly Sotheby's. #48, NY7545, 11/09/00; Marina Picasso Collection (Inv 12594).

**OPP.32:084**; PP.32:003; GS.85\*:61





**Jeune fille à la mandoline (Marie-Thérèse).** Boisgeloup. 10-January/1932. Oil on wood panel. 83,2 x 67 cm. University of Michigan Museum of Art, Ann Arbor, MI. (Inv 1994/1.69). Donated by The Carey Walker Foundation.

**OPP.32:094**; P.IV:299; PP.32:004; Z.VII:359; CB.11:166p; GP.32\*:206; HN.13:146p; JL.71:78p; KZ.32\*:206; LO.18\*:49p; PA.17a\*:5; TB.10\*:73; TO.14\*:34; YB.08\*:46

**La dormeuse au miroir (Marie-Thérèse Walter).** Boisgeloup. 14-January/1932. Oil on wood panel. 130 x 97 cm. David and Ezra Nahmad Collection. Formerly Christie's. #27, 7158, 11/14/90.

**OPP.32:005**; P.IV:304; PP.32:005; Z.VII:360; CB.11\*:165p; GP.32\*:210; HN.13\*:161p; KZ.32\*:207; LO.18\*:51p; LO.22:49p; LO.98b\*:n/a; PA.17a\*:6; RT.99\*:33; TB.10\*:70







**Nature morte à la fenêtre.** Boisgeloup. 18-January/1932. Oil on canvas. [130 x 162] 129,7 x 162,3 cm. Christie's. #42A, 22043, 05/11/23. Formerly Fondation Marie-Anne Poniatowski Krugier; Marina Picasso Collection. (Inv 12596).

**OPP.32:176**; P.IV:303; PP.32:006; Z.VII:374; BS.09a\*:n/a; BS.96\*:100; EC.07:37p; GP.32\*:219; HN.00\*:67; JR.85\*:71; KB.01\*:104; KZ.32\*:208; LO.18\*:260; LO.18\*:53p; MB.84\*:99; MP.81\*:163; MP.83\*:127; MU.07a\*:184; PA.17a\*:7; PD.02\*:59; TK.90b\*:18; VE.81\*:211; VI.05\*:150

---

**Marie-Thérèse assise par terre.** Paris. 19-January/1932. Etching. 14,9 x 9,7 cm. Musée Picasso, Paris. Dation 1979.

**OPP.32:310**; Ba:285.2E; MPP:2282.2





**Le repos.** Boisgeloup. 22-January/1932. Oil on canvas. 161,9 x 130,2 cm. The Steven and Alexandra Cohen Collection. Formerly Christie's. #43, 1655, 05/02/06.

**OPP.32:023**; P.IV:307; PP.32:007; Z.VII:361; CK.10:311; EC.02:455; EC.07:45p; FC.08\*:13; GA.00\*:52; GP.32\*:220; HN.13:146p; JR.07:n/a; JR.14\*:131p; KZ.32\*:209; LA.16:174p; LO.18\*:54p; MG.04c\*:13; MI.53\*:62; PA.17a\*:8; RO.53\*:72; RP.06\*:78; TB.10\*:71; UP.00:644; WR.96\*:345-348p; WR.96:355p; YB.99\*:61

---

**Le sommeil (Marie-Thérèse).** Boisgeloup. 23-January/1932. Oil on canvas. 130,2 x 97,2 cm. Catherine Hutin-Blay Collection, Paris. Formerly Jacqueline Roque Picasso Collection.

**OPP.32:009**; P.IV:308; PP.32:008; Z.VII:362; BE.09:129p; FC.08\*:3; GL.89\*:1; GP.32\*:209; GP.96:193p; JR.07:n/a; KZ.32\*:210; LA.16:175p; LO.18\*:55p; MI.01\*:85; MM.85a\*:18; PA.17a:32p; WW.91:349p; YB.99\*:60





**Femme dans un fauteuil (Le rêve) (Marie-Thérèse).**

Boisgeloup. 24-January/1932. Oil on canvas. 130 x 98 cm. Steve Cohen Collection. Formerly Steve Wynn Collection, Las Vegas; Mrs. Victor W. Ganz Collection, NY.

**OPP.32:010**; P.IV:306; PP.32:009; Z.VII:364; AC.81:114p; BE.09:129p; BM.05:218p; BS.55:221p; CB.11:166p; DB.89:103p; DF.10:58p; DQ.74:176p; DT.78:50; DW.05:67p; EC.02:494; FC.08\*:2; GC.07:81p; GC.96:213p; GD.77:44p; GP.32\*:211; HJ.83:103p; HJ.96:127p; HT.34\*:71; IS.98:93p; JF.03:8.5; JF.96:107p; JL.06:153p; JL.71:77p; JP.68:17; JR.07:n/a; JR.62\*:5.2; KS.62:34; KZ.32\*:211; LN.80:14; LO.18\*:57p; LO.22:34p; MF.95:76; MF.97:26p; MJ.55\*:77; MP.02\*:126; NM.95:232p; NY.43a\*:9; NY.53e\*:2; PA.17a\*:9; PA.36e\*:n/a; PD.65:144p; PH.96:42; PL.03:12; RJ.03:118; RP.11:26p; RP.91:37; RR.76:225; SG.06:113p; TG.02:61p; TI.71:39; UA.80:6; UP.00:643; WR.80\*:292p; WR.96:352p; WW.91:354p

**Deuxième de couverture.** Paris. 25-January/1932. Mixed media. 28 x 26,5 cm. Musée Picasso, Paris. Jacqueline Roque Picasso Collection. Dation 1990.

**OPP.32:119**; MPP:1990.110.c2; BL.96:40.c2; GR.90\*:107; LO.18\*:172p; PA.17a:34p





**Figure assise dans un fauteuil rouge (Marie-Thérèse).**  
[Paris]. [Early] End-January/1932. Oil on canvas. 130 x 97,5  
cm. Musée Picasso, Paris. Dation 1979.

**OPP.32:060**; MPP:139; PP.32:012; AB.05a\*:65; AB.39a\*:247;  
AB.46:173p; AS.60:38; BE.09:132p; DD.61:215p; DW.05:61p;  
GP.32\*:215; GR.90:48p; JC.01a\*:126; KZ.32\*:223;  
LO.18\*:59p; LO.90c\*:144; MA.08a\*:n/a; MA.23c\*:15;  
ME.82a\*:56; MJ.55\*:79; MP.85:117; PA.17a\*:12; PA.79a\*:214;  
RP.60\*:126; RU.17\*:50; SD.05\*:69; TE.21:39p; TV.06\*:19;  
UP.00:635; WW.91:358p

**Dormeuse.** [Paris]. 26-January/1932. Charcoal on  
canvas. 130 x 67 cm. Private collection.

**OPP.32:204**; PP.32:010; GL.89\*:2; PA.17a:34p





**Femme au fauteuil rouge (Marie-Thérèse).** [Paris]. 27-January/1932. Oil on canvas. 130,2 x 97 cm. Musée Picasso, Paris. Dation 1979.

**OPP.32:002**; MPP:138; P.IV:313; PP.32:011; Z.VII:330; AB.05b\*:165; AB.12\*:181p; AN.18:80p; BD.16\*:56; BE.09:130p; BS.03\*:n/a; CE.90:16; EC.02:489; GC.96:214p; GP.32\*:212; GP.96:187p; JM.93:81p; JR.07:468p; KZ.32\*:212; LO.18\*:58p; MA.08a\*:n/a; MA.22b\*:117; MN.80\*:n/a; MP.85:116; MS.04:42p; PA.02f\*:n/a; PA.17a\*:10; PA.19e\*:45; PA.79a\*:213; PD.09:258p; PH.96:43; RJ.03:114; RS.88:111p; RU.17\*:49; SY.11\*:n/a; TK.04\*:n/a; TV.06:194p; UP.00:634; UW.91\*:37; VB.99:39p; WR.80\*:298p; WR.96:353p; WW.91:359p

**Études d'après 'Femme assise'.** Paris. 29-January/1932. India ink & pen on paper. 28 x 26,5 cm. Musée Picasso, Paris. Jacqueline Roque Picasso Collection. Dation 1990.

**OPP.32:095**; MPP:1990.110.10r; BL.96:40.10r; GR.90\*:107; LO.18\*:173p; PA.17a:37p; PA.21e\*:229





**Nu couché.** Boisgeloup. 29-January/1932. Charcoal on paper. 28 x 26,5 cm. Musée Picasso, Paris. Jacqueline Roque Picasso Collection. Dation 1990.

**OPP.32:109**; MPP:1990.110.14r; PP.32:031; Z.VII:399; BL.96:40.14r; GR.90\*:107; LO.18\*:174p; RU.17\*:105

**Le sculpteur et Études d'après 'Femme assise'.** Paris. 29-January/1932. India ink & pen on paper. 28 x 26,5 cm. Musée Picasso, Paris. Jacqueline Roque Picasso Collection. Dation 1990.

**OPP.32:111**; MPP:1990.110.11r; P.IV:312; PP.32:019; Z.VII:370; BL.96:40.11r; GR.90\*:107; LO.18\*:173p





**Le peintre.** Paris. 29-January/1932. Charcoal. 28 x 26,5 cm. Musée Picasso, Paris. Jacqueline Roque Picasso Collection. Dation 1990.

**OPP.32:120**; MPP:1990.110.05r; PP.32:014;  
Z.VII:366; BL.96:40.5r; GR.90\*:107; LO.18\*:173p



**Le peintre.** Paris. 29-January/1932. Charcoal. 28 x 26,5 cm. Musée Picasso, Paris. Jacqueline Roque Picasso Collection. Dation 1990.

**OPP.32:121**; MPP:1990.110.06r; PP.32:015;  
Z.VII:368; BL.96:40.6r; GR.90\*:107



**Le peintre.** Paris. 29-January/1932. Charcoal. 28 x 26,5 cm. Musée Picasso, Paris. Jacqueline Roque Picasso Collection. Dation 1990.

**OPP.32:122**; MPP:1990.110.07r; PP.32:016;  
Z.VII:365; BL.96:40.7r; GR.90\*:107

**Le peintre et son modèle.** Paris. 29-January/1932. Charcoal. 28 x 26,5 cm. Musée Picasso, Paris. Jacqueline Roque Picasso Collection. Dation 1990.

**OPP.32:123**; MPP:1990.110.08r; PP.32:017;  
Z.VII:367; BL.96:40.8r; GR.90\*:107





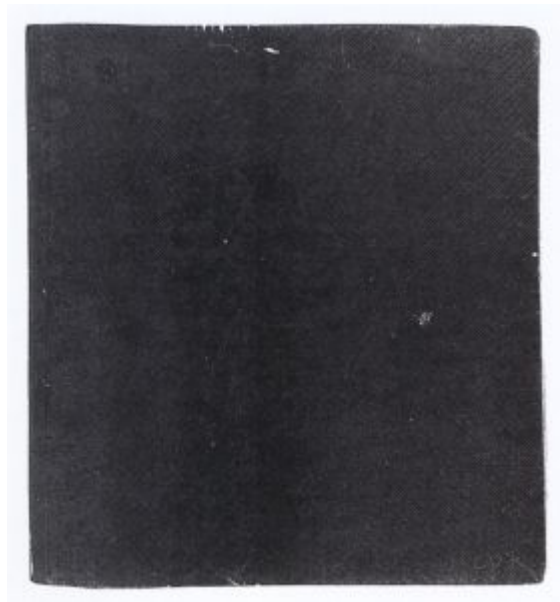


**Le peintre et son modèle devant Femme au fauteuil rouge.** Paris. 29-January/1932. Charcoal. 28 x 26,5 cm. Musée Picasso, Paris. Jacqueline Roque Picasso Collection. Dation 1990.

**OPP.32:124**; MPP:1990.110.09r; PP.32:018;  
Z.VII:369; BL.96:40.9r; GR.90\*:107; PA.17a\*:11

**1ere de couverture.** Paris. 29-January/1932~1-May/1934. Mixed media. 28 x 26 cm. Musée Picasso, Paris. Jacqueline Roque Picasso Collection. Dation 1990.

**OPP.32:230**; MPP:1990.110.c1; BL.96:40.c1;  
GR.90\*:107





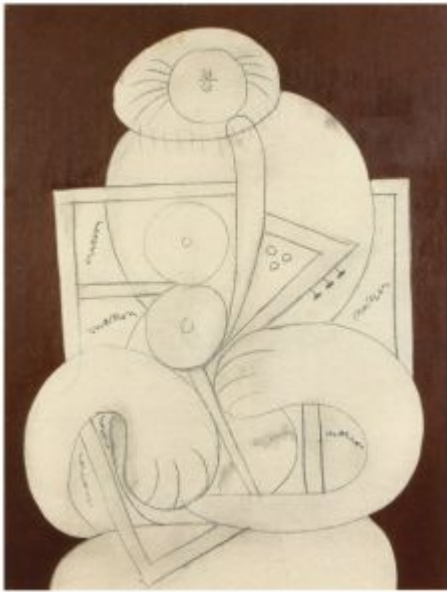
**4eme de couverture.** Paris. 29-January/1932~1-May/1934. Mixed media. 28 x 26 cm. Musée Picasso, Paris. Jacqueline Roque Picasso Collection. Dation 1990.

**OPP.32:244**; MPP:190.110.c4

**Le sculpteur (Études d'après Femme assise dans un fauteuil).** Boisgeloup. 31-January/1932. India ink & pen on paper. 28 x 26,5 cm. Musée Picasso, Paris. Jacqueline Roque Picasso Collection. Dation 1990.

**OPP.32:110**; MPP:1990.110.12r; P.IV:310; BL.96:40.12r; GR.90\*:107; LO.18\*:173p





**Étude pour une joueuse de mandoline.** Paris. 2-February/1932. Charcoal & oil paint on canvas. 130 x 97 cm. Musée Picasso, Paris. Dation Maya Ruiz-Picasso, 2021.

**OPP.32:332**; MPP:2021.3; LO.18\*:162p; PA.17a\*:11

**Comptier et guitare, fond gris.** Paris. 11-February/1932. Oil on canvas. 97 x 130 cm. Helly Nahmad Collection, Monaco/London. Formerly Christie's. #51, 03/25/90.

**OPP.32:175**; P.IV:316; PP.32:020; Z.VII:354; GP.32\*:214; HN.13\*:101p; KZ.32\*:213; LO.18\*:60p; LO.98b\*:n/a; MI.53\*:60; PA.17a\*:15; RT.99\*:22; TB.10\*:72





**Compotier et mandoline.** [Paris]. 13-February/1932. Oil on canvas. [96,8 x 129,9] 97,1 X 130,1 CM. Sotheby's. #23, N11162, 11/13/23. Formerly Sotheby's. #32, NY7466, 05/10/00; Christie's #52, 05/11/92.

**OPP.32:040**; P.IV:315; PP.32:021; Z.VII:375; BI.47\*:n/a; ED.50\*:21; GP.32\*:213; HO.90\*:12; JB.92\*:n/a; KZ.32\*:214; LO.18:61p; LO.39c\*:30; LO.45f\*:37; LO.82c\*:n/a; MR.59\*:38; NM.48\*:n/a; PA.17a:45p; PA.36e\*:3; PI.34\*:183; TI.71:34; UW.91\*:39; WR.96:71p

---

**Tête.** [Paris]. 20-February/1932. Pen & ink on paper. 11,5 x 8,6 cm. Private collection.

**OPP.32:362**; PP.32:022; Z.VII:372





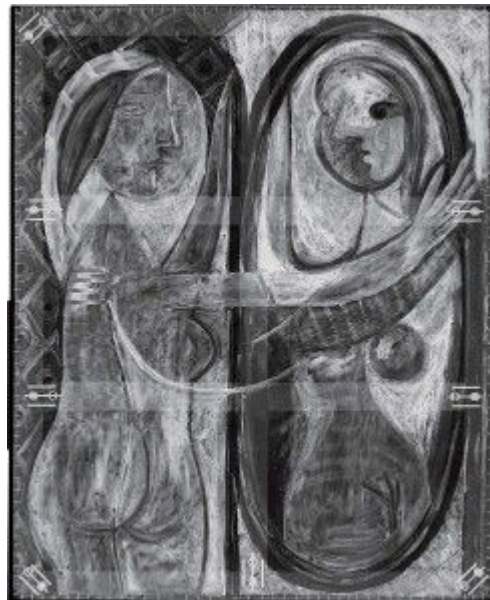
**Tête.** [Paris]. 20-February/1932. Pen & ink on paper. 8,6 x 11,5 cm. Private collection.

**OPP.32:363**; PP.32:023; Z.VII:373

---

**Jeune fille devant un miroir (Marie-Thérèse).**  
Boisgeloup. Pre-14-March/1932. X-radiograph of oil on canvas [Underlayer of *Jeune fille devant un miroir (Marie-Thérèse)*]. 162,3 x 130,2 cm. The Museum of Modern Art, NYC. (Inv 2.1938). Gift of Mrs. Simon Guggenheim, 1938.

**OPP.32:219**





**Femme nue endormie.** Boisgeloup. [Early-March]/1932. Charcoal on primed canvas. 97 x 130 cm. Marina Picasso Collection. (Inv 12648). Courtesy Galerie Jan Krugier, Geneva.

**OPP.32:210**; JR.85\*:75; MP.81\*:158;  
PA.17a:200p

---

**L'Étreinte.** Boisgeloup. March/1932. Charcoal on silk paper. 28 x 38 cm. Museo Picasso, Málaga. On temporary loan from Fundación Almine & Bernard Ruiz-Picasso para el Arte.

**OPP.32:331**; DP.20\*:74; LO.18\*:170p;  
PA.17a\*:25





**Nature morte aux tulipes.** Boisgeloup. 2-March/1932. Oil on canvas. 130 x 97 cm. Private collection. Formerly Sotheby's. #9, N08898, 11/05/12.

**OPP.32:015**; P.IV:321; PP.32:024; Z.VII:376; AB.39a\*:243; AN.84\*:16; AV.95\*:69p; FC.08\*:11; GE.87b\*:212; GP.32\*:216; HT.34\*:72; JB.92\*:94; KZ.32\*:216; LO.18\*:89p; NY.35c\*:3; NY.36b\*:4; PA.17a:50p; SP.96\*:27

**Nature morte: buste, coupe et palette.** Boisgeloup. 3-March/1932. Oil on canvas. 130,5 x 97,5 cm. Musée Picasso, Paris. Dation 1979.

**OPP.32:061**; MPP:140; P.IV:322; PP.32:025; AN.84\*:16; BA.60c\*:3; CE.04\*:5; DD.61:215p; JB.92\*:95; LM.06:42; LO.18\*:91p; MA.08a\*:n/a; ME.82a\*:53; MF.01\*:25; MN.80\*:82; MP.85:118; PA.17a\*:19; PA.79a\*:215; PE.83\*:n/a; RU.17\*:99; TG.94\*:95; UP.00:653; YB.99\*:3





**Femme nue, feuilles et buste (Marie-Thérèse).**

Boisgeloup. 8-March/1932 [1933]. Oil on canvas. 162 x 130 cm. Tate Modern, London. (Inv L02971). On long term loan from a private collection. Formerly Christie's. #6, 2410, 05/04/10; Frances Lasker Brody Collection, Los Angeles, CA.

**OPP.32:167**; P.IV:324; PP.32:027; BS.12\*:61; DK.61\*:25; DK.61\*:25p; GP.32\*:223; JB.65:90; KZ.32\*:217; LO.18\*:93p; LO.22:36p; OW.13:67p; PA.17a:53p; PA.36e\*:n/a; RP.11:31p; RU.17:57p; TC.13:I.2; VO.16:67p

**Nu au fauteuil noir (Marie-Thérèse).** Boisgeloup. 9-March/1932. Oil on canvas. 161 x 130 cm. Abigail and Leslie H. Wexner Collection. Courtesy Richard Gray Gallery. Formerly Mrs. Meric Gallery; Christie's #507, 11/09/99; Madeleine Haas Russell Collection.

**OPP.32:050**; P.IV:323; PP.32:026; Z.VII:377; AB.39a\*:244; AB.46:174p; AB.57\*:72p; AC.46:209; AH.88:36; AS.60:42; DL.67\*:n/a; EC.02:456; EC.07:68p; FC.08\*:8; GP.32\*:221; HC.88:46; IO.69\*:n/a; JB.65:58; JC.01a:148p; JF.94b:108; KZ.32\*:218; LO.18\*:95p; MF.95:75; MP.02\*:120; NY.45a\*:10; NY.48a\*:n/a; NY.48n\*:19; NY.65e\*:2; PA.17a\*:20; PA.36e\*:n/a; PH.45a\*:n/a; PH.58\*:127; RP.81:13.4; RU.17:99p; SF.96a\*:n/a; TC.13:I.1; TO.49\*:21; TO.64\*:109; UP.00:641; WR.80\*:293p; WW.94\*:108







**Le miroir (Marie-Thérèse).** Boisgeloup. 12-March/1932. Oil on canvas. 130,7 x 97 cm. Private collection, Monaco. Formerly Sotheby's. #45, 11/07/95; Sotheby's. #52, 11/15/89; Gustav Stern Foundation, Inc., NY.

**OPP.32:051**; P.IV:325; PP.32:028; Z.VII:378; AB.39a\*:245; AB.46:175p; AC.81:113p; DW.05:66p; GP.32\*:217; JB.65:61; JC.01a:148p; JF.94b:109; KS.62:35; KZ.32\*:219; LN.80:18; LO.18\*:97p; LP.99:131p; MJ.55\*:78; PA.17a:55p; PD.65:148p; RJ.03:51; RP.60\*:127; RP.67a:16; TH.75:164; UP.00:645; WR.80\*:293p; WR.96:356p; WW.91:352p; WW.94\*:109; YB.99\*:62

**La dormeuse.** Boisgeloup. 13-March/1932. Oil & charcoal on canvas. 130,2 x 161,9 cm. Phillips. #10, UK010118, 03/08/18.

**OPP.32:007**; P.IV:335; PP.32:029; BN.06\*:n/a; BS.96\*:101; EC.07:56p; EC.16:124; GL.84\*:19; LO.18:99p; MA.86\*:17; MM.85a\*:20; MP.02\*:109; NY.95a\*:51; YB.99\*:39





**Femme nue couchée (Marie-Thérèse).**

Boisgeloup. 13-March/1932. Charcoal on canvas. 97,2 x 130,2 cm. Bill Blass Collection. Formerly Catherine Hutin-Blay Collection; Sotheby's. #23, N07934, 11/05/03.

**OPP.32:008**; P.IV:336; PP.32:030; BO.16\*:n/a; CG.12\*:48; GP.96:194p; LO.18\*:169p; LU.93:174; MI.01\*:84; MM.06\*:17; MM.85a\*:19; MP.02\*:n/a; NY.95a\*:50; PA.17a\*:21; RP.11\*:174-175p

**Jeune fille devant un miroir (Marie-Thérèse).**

Boisgeloup. 14-March/1932. Oil on canvas [Overlayer of *Jeune fille devant un miroir (Marie-Thérèse)*]. 162,3 x 130,2 cm. The Museum of Modern Art, NYC. (Inv 2.1938). Gift of Mrs. Simon Guggenheim, 1938.

**OPP.32:001**; P.IV:326; PP.32:033; Z.VII:379; AB.39a\*:246; AB.46:2p; AB.57\*:n/a; AB.88:30p; AC.46:208; AC.81:116p; AT.11\*:1; AT.84:18; CG.93:220; CR.84:157p; DW.05:65p; EC.02:460; EC.07:36p; FG.64:238p; GP.32\*:200; GP.96:185p; GR.03:63p; HD.01:43; HD.04:43p; HT.34\*:70; JB.92:354p; JL.06:157p; JL.71:53p; JM.93:82p; JR.07:469p; JR.86:188; KA.55\*:n/a; KZ.32\*:220; LB.58:71p; LO.18\*:101p; LO.37c\*:9; MF.06\*:94; MF.95:77; MG.80:6; MP.02\*:121; MR.53:94p; MS.00a:33p; MS.04:42p; NH.94:49p; NM.95:355p; NY.36b\*:2; NY.54f\*:n/a; NY.64c\*:n/a; PA.17a\*:22; PA.36e\*:n/a; PD.09:261p; PK.05:5; PM.91:7; RJ.03:44; RL.89:ii; RM.94:49p; RP.81:13.3; RR.76:227; RS.88:118p; RU.17:86p; SC.71:141; SF.49a\*:n/a; SG.06:111p; SG.96:4.32; TH.75:165; UP.00:646; VK.97\*:101p; WR.72\*:139p; WR.80\*:291p; WR.96:357p; WW.91:353p





**Le repos (Marie-Thérèse).** [Boisgeloup].  
Spring/1932. Oil on canvas. [46 x 46] 46,5 x 46,5  
cm. Sotheby's. #8, N09860, 05/14/18. Formerly  
Sotheby's. #37, NY7545, 11/09/00.

**OPP.32:052**; PP.32:045; Z.VII:387; JF.94b:112;  
LO.48d\*:5; LP.99:128-129p; PA.17a:88p;  
WW.94\*:112

---

**Nu allongé.** Boisgeloup.  
[Spring~Summer]/1932. Charcoal & color  
pencil on tissue paper. 24,5 x 35,4 cm.  
Musée Picasso, Paris. Dation 1979.

**OPP.32:155**; MPP:1023; PP.32:056;  
Z.VIII:60; PA.17a\*:31; PD.06\*:n/a;  
TK.04\*:n/a





**Femme étendue au soleil.** Boisgeloup. [24~]  
25-March/1932. Oil & pencil on canvas. 130 x 162  
cm. Catherine Hutin-Blay Collection, Paris.  
Formerly Jacqueline Roque Picasso Collection.

**OPP.32:030**; P.IV:320; PP.32:035; Z.VII:355;  
BA.23\*:41p; EC.07:2; JL.71:60p; LM.17\*:n/a;  
LO.18\*:102p; MG.04c\*:15; PA.17a\*:28;  
TO.14\*:31; TO.99\*:49

---

**Femme étendue sur la plage.**

Boisgeloup. 25-March/1932. Oil & charcoal  
on tracing paper. 24,4 x 35,2 cm. Musée  
Picasso, Paris. Dation 1979.

**OPP.32:031**; MPP:1069; P.IV:317;  
PP.32:036; Z.VII:356; EC.07:1; IC.05\*:68;  
LO.18\*:102p; PA.17a\*:27; PA.79a\*:512;  
PD.06\*:254p; RU.17\*:170





**Femme étendue sur la plage II.** Boisgeloup.  
26-March/1932. Oil on canvas. 22 x 27 cm. Private collection.

**OPP.32:065**; P.IV:319; EC.07:4; LO.18\*:103p;  
PA.17a\*:30; TO.14\*:29; TO.99\*:50

**Femme allongée au soleil.** Boisgeloup.  
26-March/1932. Oil on canvas. 24 x 33 cm.  
Fundación Almine & Bernard Ruiz-Picasso  
para el Arte.

**OPP.32:178**; CG.04\*:15; EC.07:3;  
LO.18\*:103p; MG.04b\*:68; PA.17a\*:29;  
PA.19e\*:10





**Femme étendue sur la plage.** Boisgeloup. 26-March/1932. Oil on canvas. 22 x 27 cm. Private collection.

**OPP.32:179**; AC.07:5; LO.18:103p

**Femme étendue sur la plage.**

Boisgeloup. [Spring~Summer/1931] 28-March/1932. Oil on canvas. 33 x 40 cm. Scottish National Gallery of Modern Art, Edinburgh. (Inv GML.758). On loan, 1994. The Penrose Collection.

**OPP.32:153**; P.IV:318; PP.31:043a; Z.VII:353; AP.01:40p; BS.12\*:69; EC.07:6; JR.21:131p; LO.18\*:105p; PA.17a\*:32; SS.76:177; YB.08\*:51





**Village sous la pluie (Boisgeloup).** Boisgeloup. [Spring] [29-March]/1932. Oil on canvas. 46 x 46 cm. Marina Picasso Collection. (Inv 12615). Courtesy Galerie Jan Krugier, Geneva.

**OPP.32:062**; P.IV:330; PP.32:039; MP.81\*:156; TO.99\*:46; WR.96:354p

---

**Boisgeloup sous la pluie.** Boisgeloup. 29-March/1932. Oil on canvas. 27 x 41 cm. Sotheby's. #52, 06/26/90. Formerly Oriol Galeria d'Art.

**OPP.32:063**; P.IV:331; PP.32:037; TO.99\*:47





**Vue de Boisgeloup.** Boisgeloup. 29-March/1932.  
Oil on canvas. 27 x 41 cm. Fundación Almine &  
Bernard Ruiz-Picasso para el Arte.

**OPP.32:233**; PP.31:071; Z.VII:340;  
LO.18\*:106p; PA.17a\*:33; PA.17b\*:192

---

**Boisgeloup sous la pluie.** Boisgeloup. 29-  
March/1932. Oil on canvas. 27 x 22 cm. Fundación  
Almine & Bernard Ruiz-Picasso para el Arte.

**OPP.32:405**; CT.23\*:18; RU.17\*:3







**Boisgeloup sous la pluie.** Boisgeloup. 30-March/1932. Oil on cloth. 47,5 x 83 cm. Musée Picasso, Paris. Dation 1979.

**OPP.32:164**; MPP:141; P.IV:329; PP.32:038; Z.VII:339; CT.23\*:19; EC.07:19p; LO.18\*:107p; MP.85:119; PA.17a\*:34; PA.21e\*:273; PA.21g\*:132p; PA.79a\*:216; RU.17\*:2

---

**Boisgeloup sous la pluie.** Boisgeloup. 30-March/1932. Oil on canvas. 19 x 24 cm. Fundación Almine & Bernard Ruiz-Picasso para el Arte.

**OPP.32:423**; PA.17a\*:35





**Buste de femme de profil (Marie-Thérèse).** Boisgeloup. 1-  
April/1932. Oil on canvas. [116,8 x 73,4] 116,3 x 73,5 cm. Sotheby's.  
#17, L18006, 06/19/18.

**OPP.32:011**; PP.32:065; Z.VII:406; NY.78c\*:n/a; PA.17a:141p

**Femme dans un fauteuil jaune (Marie-Thérèse).**  
Boisgeloup. April/1932. Oil on canvas. 116 x 89 cm.  
Private collection.

**OPP.32:177**; P.IV:340; PP.32:044; Z.VII:380;  
BS.55:263; EC.16\*:121; GP.32\*:218; KZ.32\*:215;  
LO.18\*:113p; MI.53\*:66; MP.02\*:125; PA.17a\*:38





**Femme nue couchée (Marie-Thérèse).**

Boisgeloup. 2-April/1932. Oil & Ripolin on canvas. [130 x 161] 129,9 x 161,7 cm. Christie's. #23, N10948, 05/17/22.

**OPP.32:116**; PP.32:042; Z.VII:331; AB.05a\*:55; EC.07:69p; FC.08\*:6; JL.66\*:158; JR.14\*:170-171p; JR.17\*:50-51p; LM.06:45; LO.18\*:109p; MG.03b\*:23; MG.18:57p; NY.09a\*:n/a ; NY.16d\*:n/a; PA.17a\*:37; RP.11\*:160-161p; RU.17:58p; SZ.96\*:113; TG.94\*:96; TG.94\*:96; TK.81a\*:32

**Nu couché (Marie-Thérèse).** Boisgeloup. 4-April/1932. Oil on canvas. 130 x 161,7 cm. Musée Picasso, Paris. Dation 1979.

**OPP.32:006**; MPP:142; P.IV:337; PP.32:041; Z.VII:332; AB.05a\*:88; AB.12\*:182p; EC.02:457; EC.07:70p; GP.96:186p; IS.98:89p; JC.01a\*:128; JF.03:8.4; JM.93:80p; JR.07:470p; LO.18\*:111p; MA.08a\*:n/a; MI.18\*:n/a; MI.53\*:64; MP.85:120; MS.04:43p; PA.17a\*:39; PA.19e\*:5; PA.79a\*:217; PD.09:260p; RS.88:110p; RU.17\*:101; SD.05\*:70; SP.04\*:n/a; SY.11\*:n/a; TK.04\*:n/a; UP.00:642; WR.80\*:296p; WR.96:71p; WW.91:344p





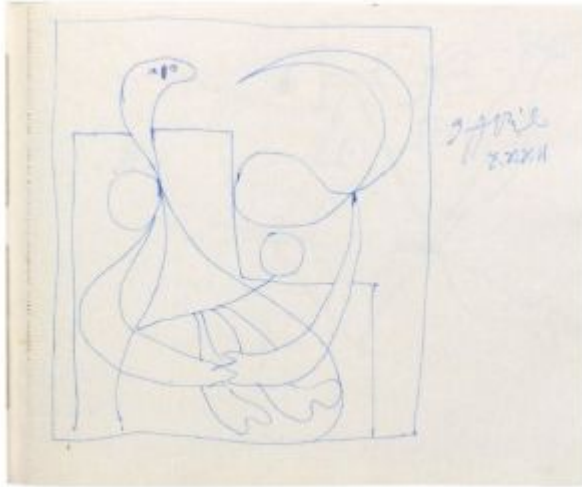
**Figures et plante.** Boisgeloup. 4-April/1932. Oil on panel. 18,4 x 23,8 cm. Phillips. #14, NY010322, 05/18/22.

**OPP.32:368**; PP.32:075; Z.VII:404; GE.63a\*:27; NY.41m\*:8

**Figure féminine.** Paris. 9-April/1932. Ink on paper. 20,5 x 24,5 cm. Fundación Almine & Bernard Ruiz-Picasso para el Arte. Carnet 17.

**OPP.32:337**; LO.18\*:157p





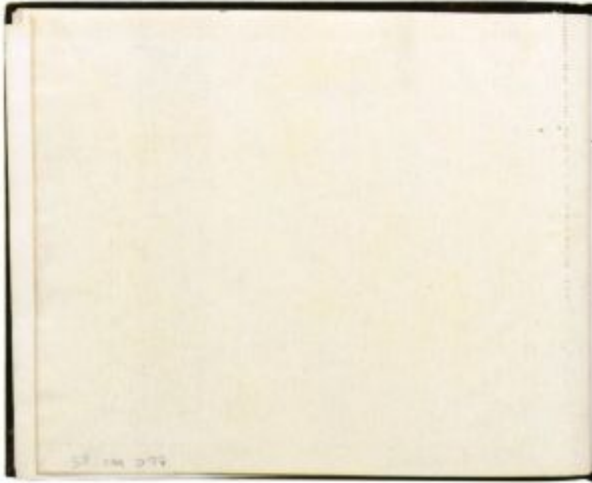
**Figure féminine.** Paris. 9-April/1932. Ink on paper. 20,5 x 24,5 cm. Fundación Almine & Bernard Ruiz-Picasso para el Arte. Carnet 17.

**OPP.32:338**; LO.18\*:157p

**Femme à la fleur (Marie-Thérèse).** Boisgeloup. 10-April/1932. Oil on canvas. 162 x 130 cm. Mr. and Mrs. Nathan Cummings Collection, Chicago. Formerly Galerie Beyeler, Basel.

**OPP.32:013**; P.IV:339; PP.32:043; Z.VII:381; BS.55:135; CH.68a\*:36; EC.07:62p; GP.32\*:222; HC.88:47; IW.93:59p; JL.71:78p; JR.07:471p; KZ.32\*:221; LN.80:21; LO.18:112p; MI.53\*:61; MR.53:93p; NY.56b\*:n/a; ON.66:36p; PA.17a:75p; PD.09:260p; SS.76:175; UP.00:652; WR.80\*:297p; WR.96:349p; WW.91:351p; WW.94\*:117





**Page blanche.** Paris. 10-April/1932. Blank page.  
20,5 x 24,5 cm. Fundación Almine & Bernard Ruiz-  
Picasso para el Arte. Carnet 17.

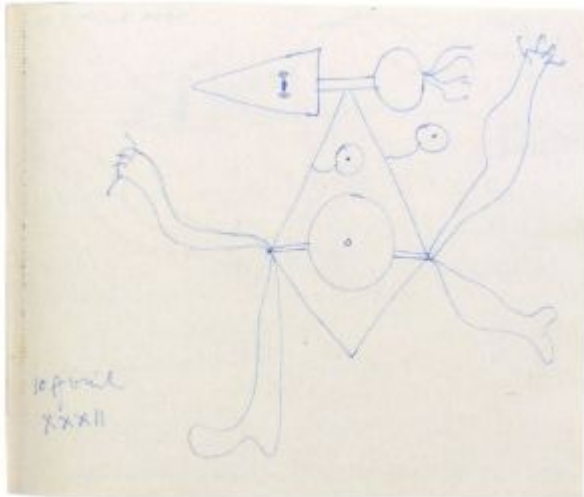
**OPP.32:335**; LO.18\*:161p

---

**Inscription.** Paris. 10-April/1932. Ink on  
paper. 20,5 x 24,5 cm. Fundación Almine &  
Bernard Ruiz-Picasso para el Arte. Carnet  
17.

**OPP.32:336**; LO.18\*:161p



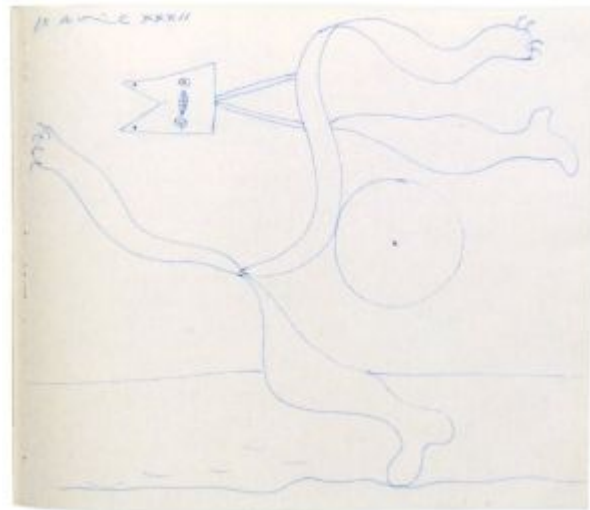


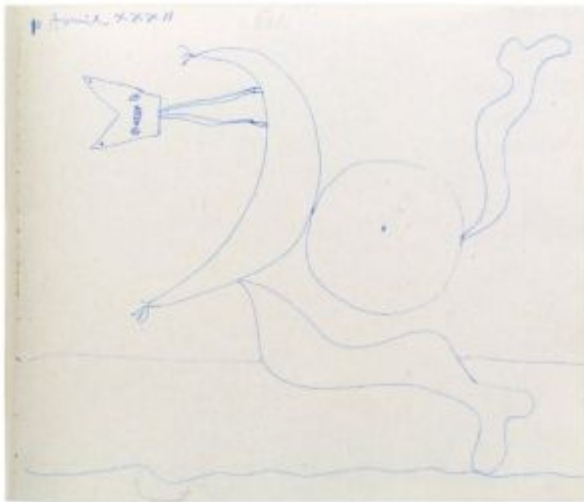
**Figure féminine.** Paris. 10-April/1932. Ink on paper. 20,5 x 24,5 cm. Fundación Almine & Bernard Ruiz-Picasso para el Arte. Carnet 17.

**OPP.32:339**; LO.18\*:157p

**Figure féminine.** Paris. 10-April/1932. Ink on paper. 20,5 x 24,5 cm. Fundación Almine & Bernard Ruiz-Picasso para el Arte. Carnet 17.

**OPP.32:340**; LO.18\*:157p; PA.17a\*:41





**Figure féminine.** Paris. 10-April/1932. Ink on paper. 20,5 x 24,5 cm. Fundación Almine & Bernard Ruiz-Picasso para el Arte. Carnet 17.

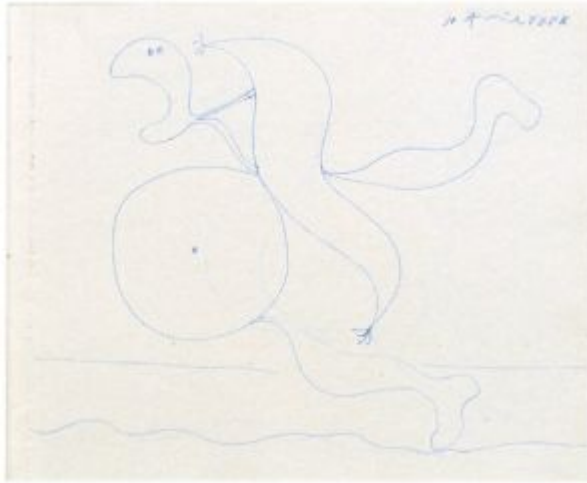
**OPP.32:341;** LO.18\*:157p

**Figure féminine.** Paris. 10-April/1932. Ink on paper. 20,5 x 24,5 cm. Fundación Almine & Bernard Ruiz-Picasso para el Arte. Carnet 17.

**OPP.32:342;** LO.18\*:157p





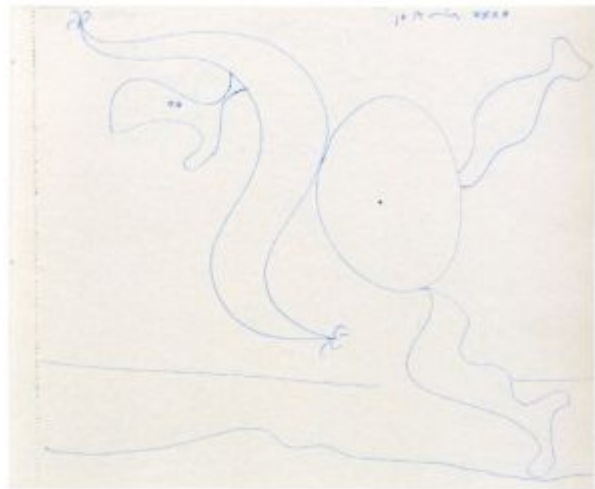


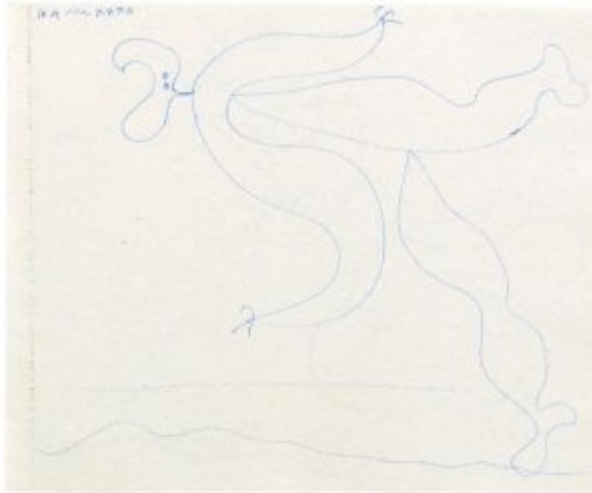
**Figure féminine.** Paris. 10-April/1932. Ink on paper. 20,5 x 24,5 cm. Fundación Almine & Bernard Ruiz-Picasso para el Arte. Carnet 17.

**OPP.32:343**; LO.18\*:158p

**Figure féminine.** Paris. 10-April/1932. Ink on paper. 20,5 x 24,5 cm. Fundación Almine & Bernard Ruiz-Picasso para el Arte. Carnet 17.

**OPP.32:344**; LO.18\*:158p



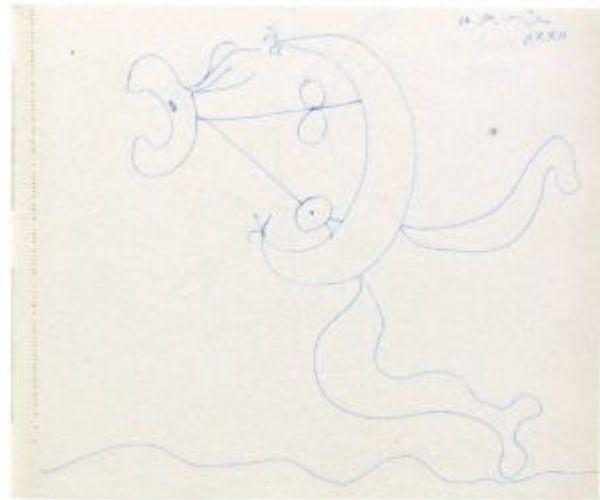


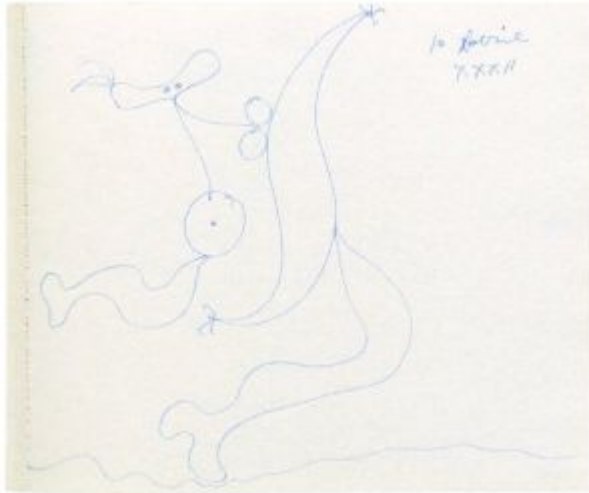
**Figure féminine.** Paris. 10-April/1932. Ink on paper. 20,5 x 24,5 cm. Fundación Almine & Bernard Ruiz-Picasso para el Arte. Carnet 17.

**OPP.32:345;** LO.18\*:158p

**Figure féminine.** Paris. 10-April/1932. Ink on paper. 20,5 x 24,5 cm. Fundación Almine & Bernard Ruiz-Picasso para el Arte. Carnet 17.

**OPP.32:346;** LO.18\*:158p



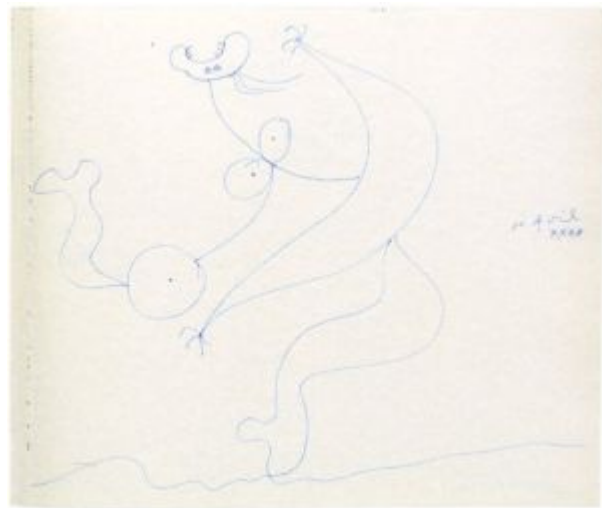


**Figure féminine.** Paris. 10-April/1932. Ink on paper. 20,5 x 24,5 cm. Fundación Almine & Bernard Ruiz-Picasso para el Arte. Carnet 17.

**OPP.32:347**; LO.18\*:158p

**Figure féminine.** Paris. 10-April/1932. Ink on paper. 20,5 x 24,5 cm. Fundación Almine & Bernard Ruiz-Picasso para el Arte. Carnet 17.

**OPP.32:348**; LO.18\*:158p





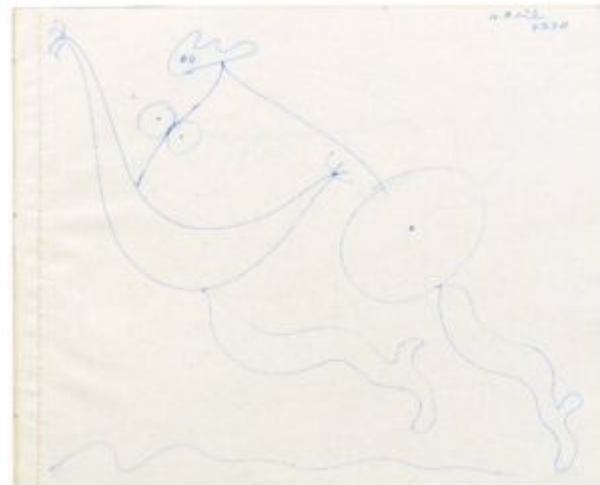
**Figure féminine.** Paris. 10-April/1932. Ink on paper. 20,5 x 24,5 cm. Fundación Almine & Bernard Ruiz-Picasso para el Arte. Carnet 17.

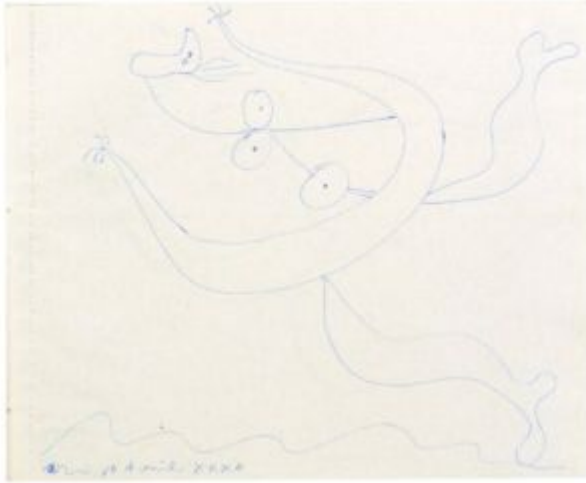
**OPP.32:349**; LO.18\*:159p

---

**Figure féminine.** Paris. 10-April/1932. Ink on paper. 20,5 x 24,5 cm. Fundación Almine & Bernard Ruiz-Picasso para el Arte. Carnet 17.

**OPP.32:350**; LO.18\*:159p





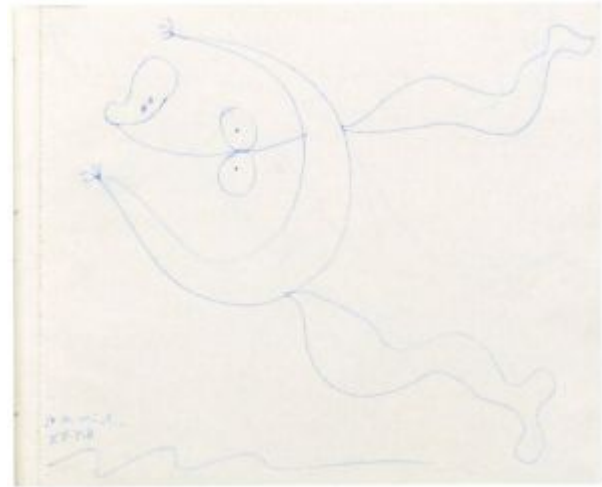
**Figure féminine.** Paris. 10-April/1932. Ink on paper. 20,5 x 24,5 cm. Fundación Almine & Bernard Ruiz-Picasso para el Arte. Carnet 17.

**OPP.32:351**; LO.18\*:159p

---

**Figure féminine.** Paris. 10-April/1932. Ink on paper. 20,5 x 24,5 cm. Fundación Almine & Bernard Ruiz-Picasso para el Arte. Carnet 17.

**OPP.32:352**; LO.18\*:159p





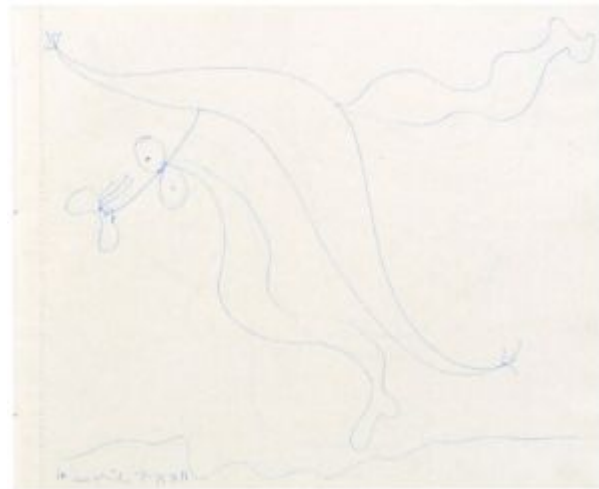
**Figure féminine.** Paris. 10-April/1932. Ink on paper. 20,5 x 24,5 cm. Fundación Almine & Bernard Ruiz-Picasso para el Arte. Carnet 17.

**OPP.32:353**; LO.18\*:159p

---

**Figure féminine.** Paris. 10-April/1932. Ink on paper. 20,5 x 24,5 cm. Fundación Almine & Bernard Ruiz-Picasso para el Arte. Carnet 17.

**OPP.32:354**; LO.18\*:159p





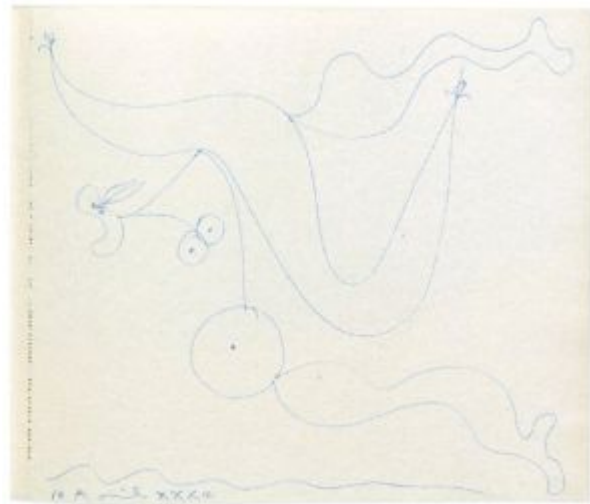
**Figure féminine.** Paris. 10-April/1932. Ink on paper. 20,5 x 24,5 cm. Fundación Almine & Bernard Ruiz-Picasso para el Arte. Carnet 17.

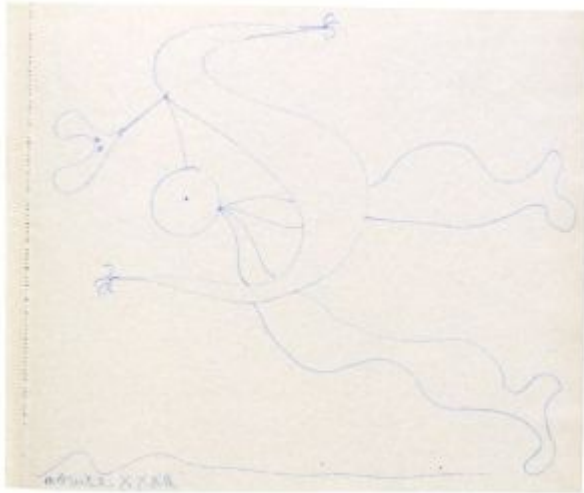
**OPP.32:355**; LO.18\*:160p

---

**Figure féminine.** Paris. 10-April/1932. Ink on paper. 20,5 x 24,5 cm. Fundación Almine & Bernard Ruiz-Picasso para el Arte. Carnet 17.

**OPP.32:356**; LO.18\*:160p



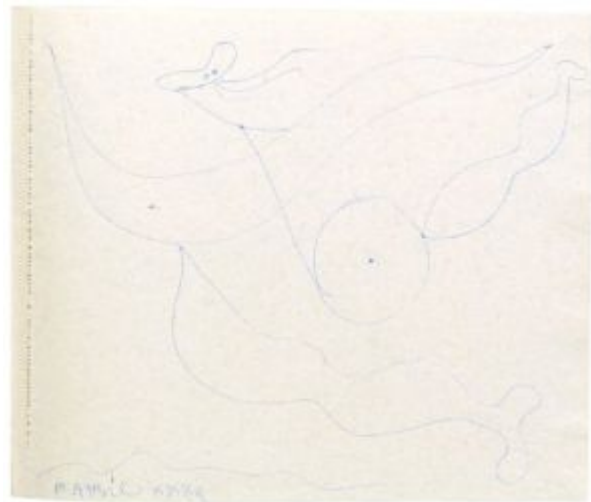


**Figure féminine.** Paris. 10-April/1932. Ink on paper. 20,5 x 24,5 cm. Fundación Almine & Bernard Ruiz-Picasso para el Arte. Carnet 17.

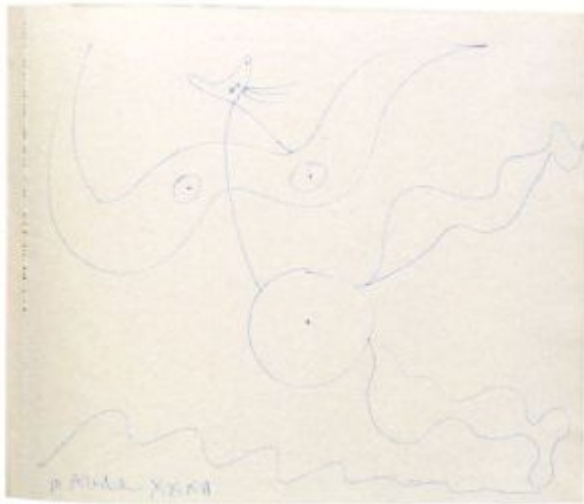
**OPP.32:358;** LO.18\*:160p

**Figure féminine.** Paris. 10-April/1932. Ink on paper. 20,5 x 24,5 cm. Fundación Almine & Bernard Ruiz-Picasso para el Arte. Carnet 17.

**OPP.32:359;** LO.18\*:160p





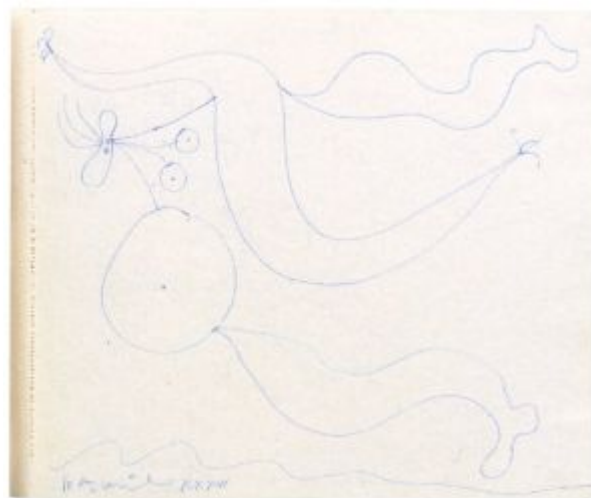


**Figure féminine.** Paris. 10-April/1932. Ink on paper. 20,5 x 24,5 cm. Fundación Almine & Bernard Ruiz-Picasso para el Arte. Carnet 17.

**OPP.32:360**; LO.18\*:160p

**Figure féminine.** Paris. 10-April/1932. Ink on paper. 20,5 x 24,5 cm. Fundación Almine & Bernard Ruiz-Picasso para el Arte. Carnet 17.

**OPP.32:357**; LO.18\*:160p





**Boisgeloup sous la pluie et l'arc-en-ciel.**

Boisgeloup. 5-May/1932. Oil on canvas. 35 x 35 cm. Fundación Almine & Bernard Ruiz-Picasso para el Arte.

**OPP.32:371**; PP.32:040; Z.VII:341; CT.23\*:20; PA.17a:84p; RU.17\*:1

**Village sous la pluie, Arc-en-ciel.**

Boisgeloup. 6-May/1932. Oil on canvas. 27,3 x 46,2 cm. Private collection.

**OPP.32:064**; P.IV:328; LO.18\*:n/a; PA.17a\*:49; TO.99\*:48





**Vue de Boisgeloup sous la pluie et arc-en-ciel.** Boisgeloup. 6-May/1932. Oil on canvas. 27 x 46 cm. Fundación Almine & Bernard Ruiz-Picasso para el Arte.

**OPP.32:234**; LO.18\*:n/a; PA.17a\*:50;  
PA.17b\*:193

---

**Deux hirondelles.** [Paris] Boisgeloup.  
[Winter/1931] 14-May/1932. Oil on canvas.  
41 x 41 cm. Sotheby's. #65, N09740,  
11/14/17. Formerly Sotheby's. #10,  
N09219, 11/04/14.

**OPP.32:026**; PP.31:016; Z.VII:342;  
PA.17a:87p; RU.17:56p; WW.91:21p





**Femme endormie (Marie-Thérèse)**. Boisgeloup. 16-May/1932. Oil on canvas. 46 x 46 cm. Private collection. Formerly Sotheby's, #26, N07934, 11/05/03.

**OPP.32:087**; P.IV:334; PP.32:046; DD.61:215p; LO.18\*:114p; PA.17a\*:52

---

**Le repos (Marie-Thérèse)**. Boisgeloup. 17-May/1932. Oil on canvas. 27,3 x 46,3 cm. Mr. Giancarlo Giammetti Collection, London. Formerly Christie's. #43A, 15004, 11/13/17.

**OPP.32:028**; PP.32:047; LO.18\*:115p; SY.38\*:n/a; WW.94\*:111





**Nu couché sur un coussin rouge (Marie-Thérèse)**. Boisgeloup. 22-May/1932. Oil on canvas. 33 x 55 cm. Musée National d'Art Moderne, Centre Georges Pompidou, Paris.

**OPP.32:021**; P.IV:332; PP.32:050; Z.VII:382

---

**Femme endormie à l'oreiller rouge (Marie-Thérèse)**. Boisgeloup. 22-May/1932. Oil on canvas. 38 x 46 cm. Marina Picasso Collection. Courtesy Galerie Jan Krugier, Geneva.

**OPP.32:083**; P.IV:352; PP.32:049; MP.83\*:130; PA.17a:89p





**Fille à la tête sur la table.** Boisgeloup. 22-May/1932. Oil on canvas [OIC]. 40,6 x 40,6 cm. Private collection.

**OPP.32:425**; PP.32:048; LO.60e\*:128

**Tête d'homme barbu.** Paris. 26-May/1932. Monotype in grey & black over a white gouache ground, on laid paper [After *Portrait d'homme barbu*]. 26,2 x 21,7 cm. Christie's. #0374, 7419, 09/18/07. Formerly Marina Picasso Collection.

**OPP.32:137**





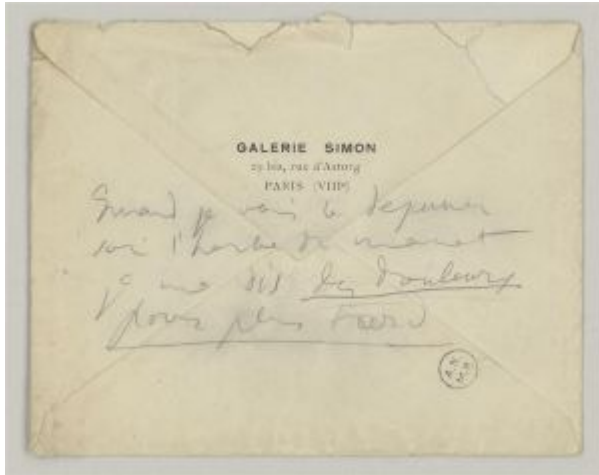
**Portrait d'homme barbu.** Paris. 26-May/1932. Brush & ink on Japan paper laid down on paper. 30 x 24 cm. Sotheby's. #92, N09727, 05/18/17. Formerly Marina Picasso Collection.

**OPP.32:231**

**Pensée écrite au dos d'une enveloppe à l'en-tête de la Galerie Simon.** Paris. June/1932. Pencil on paper. 11,5 x 14,5 cm. Musée Picasso, Paris. (Inv 515AP/B/1/1).

**OPP.32:334**





**Pensée écrite par l'artiste 'Quand je vois le déjeuner sur l'herbe ...'**. Vallauris. June/1932. Graphite on envelope from Galerie Simon, Paris. 11,5 x 14,5 cm. Musée Picasso, Paris. (Inv 515AP/B/1/1).

**OPP.32:421**; LE.21\*:391; PA.17a\*:69

---

**Tête de Marie-Thérèse.**

Paris~Boisgeloup. 4-June/1932 ~  
March/1934. Oil on canvas. [46 x 46] 46,4  
x 46,4 cm. Sotheby's. #11, HK0778A,  
03/16-31/18.

**OPP.32:097**; PP.34:042; PA.17a:93p;  
WR.96\*:364p







**Femme assise (Pour Monsieur et Madame Chester Dale).** Paris. 16-June/1932. Pen & ink on paper on printed catalogue from Galeries Georges Petit, Exposition Picasso, 1932. S/U. National Gallery of Art Library. Gift of Chester Dale.

**OPP.32:215**; PA.17a:103p

**Tête de femme (Pour Mlle Ring).** Boisgeloup. 16-June/1932. Pen & brown ink on paper [OIC]. 27,3 x 20,3 cm. Private collection. Formerly Christie's. #189, 02/20/90.

**OPP.32:426**; PP.32:050a





**Femme nue couchée au collier (Marie-Thérèse)**. Boisgeloup. 18-June/1932. Oil on canvas. [41 x 41] 40,6 x 40,6 cm. Justin Sun. Formerly Christie's. #18, 19586, 03/23/21; Christie's. #15, 2844, 05/06/14.

**OPP.32:086**; P.IV:342; PP.32:052; Z.VII:383; LO.18:131p; LO.37c\*:5; NY.65d\*:11; NY.78c\*:35; PA.17a\*:72; PA.36e\*:11

**Nu couché sur un coussin rouge (Marie-Thérèse)**. Boisgeloup. 18-June/1932. Oil on canvas. 33 x 55 cm. Private collection.

**OPP.32:192**; P.IV:333; LO.18\*:130p; PA.17a\*:71; RP.11\*:177p





**Femme nue couchée (Marie-Thérèse).**

Boisgeloup. [26] 19-June/1932. Oil on canvas. 38 x 46 cm. Musée National d'Art Moderne, Centre Georges Pompidou, Paris. (Inv AM.1984.631). Donation Louise & Michel Leiris, 1984.

**OPP.32:020**; PP.32:053; BA.22\*:44p; CB.11:180p; DU.95\*:93p; GU.00:58; JS.46:13; LO.18\*:133p; MM.04\*:85p; MS.04\*:n/a; ND.01\*:24; PA.17a\*:73; RU.17:100p; TI.71:106p; UW.91\*:40; WW.91:350p

---

**Nu couché (Marie-Thérèse).** Boisgeloup. 19-June/1932. Oil on open envelope. 26,5 x 31,5 cm. Musée Picasso, Paris. Dation 1979.

**OPP.32:141**; MPP:1070; P.IV:341; PP.32:051; Z.VII:386; LO.18\*:n/a; PA.79a\*:513; PD.06\*:92p; RJ.01\*:n/a; RU.17\*:10; TK.04\*:n/a





**Nu au collier (Marie-Thérèse).** Boisgeloup. Summer/1932. Oil on canvas. 92 x 73 cm. Private collection, Europe. Courtesy Libby Howie. Formerly Christie's. #12, 6590, 06/25/02.

**OPP.32:029**; PP.32:074; Z.VIII:69; LO.18:142; OS.46\*:80; OS.56\*:73; PA.17a:145p

---

**Étude pour une sculpture (Marie-Thérèse).** Boisgeloup. Summer/1932. Charcoal on prepared fabric. 92 x 73 x 2,5 cm. Fondation Beyeler, Riehen/Basel. (Inv 73.5). Ernst Beyeler Collection, Basel.

**OPP.32:039**; P.IV:391; PP.32:081; AB.05a\*:62; AG.89:28; AH.13\*:75; AU.89\*:28; CG.12\*:42; FC.08\*:9; GP.96:173p; HJ.83:25p; HJ.96:25p; LM.06:44; LO.18\*:73p; PA.17a\*:55; TG.94\*:93; UP.00:623; UW.91\*:38; WR.80\*:287p; WR.96:351p; WS.11:75p





**Buste de femme (Marie-Thérèse).** Boisgeloup. Summer/1932. Oil on wood panel. 74 x 52 cm. Mr. and Mrs. Lee A. Ault Collection, NY.

**OPP.32:088**; PP.32:064; Z.VII:405; AB.39a\*:249; AB.46:176p; AS.60:39; CG.12\*:52; JR.62\*:5.6; NY.42j\*:9; NY.44c\*:34; PA.17a:141p; SF.48b\*:11

**Tête de femme.** Paris. [Summer]/1932. Plaster. 65 x 43 x 22 cm. Musée Picasso, Paris. Dation 1979.

**OPP.32:163**; MPP:295; P.IV:393; PP.32:083; WS:120.I; BA.04c\*:n/a; LO.18\*:90p; PA.17a\*:18; PA.21e\*:293; PA.79a\*:222; RU.17\*:43





**Flûtiste et femme nue (III)**. Paris. Summer/1932. Drypoint on Vergé paper. 45 x 34 cm. Musée Picasso, Paris. Dation 1979.

**OPP.32:290**; Ba:260; MPP:2181

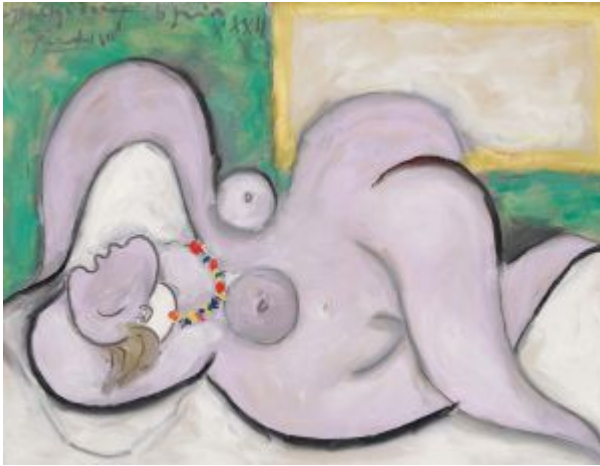
---

**Femme etendue les bras sous la nuque sur un lit rouge (Marie-Thérèse)**.

Boisgeloup. 26-June/1932. Oil on canvas. 27 x 35 cm. The Picasso Estate. (Inv 12622).

**OPP.32:099**; LO.18\*:135p; LO.22:33p; YB.08\*:48





**Nu devant la glace.** Boisgeloup. 26-June/1932. Oil & Ripolin on canvas. 27 x 35 cm. Sotheby's. #131, N11157, 05/16/23. Bettina and Donald L. Bryant, Jr. Collection.

**OPP.32:216**; PP.32:054; Z.VII:388;  
LO.18\*:134p; NY.06f\*:n/a; NY.19c\*:75p;  
PA.17a\*:74; PC.69\*:35; PH.64\*:n/a;  
PH.65c\*:n/a; PH.66\*:n/a; PH.68\*:n/a;  
PH.69\*:n/a; PH.70b\*:n/a; PH.71\*:n/a;  
PH.72\*:n/a; SF.66\*:n/a

**Femme couchée.** Boisgeloup. 26-June/1932. Oil on lid of cardboard box. 10,5 x 19,3 x 3,5 cm. Musée National d'Art Moderne, Centre Georges Pompidou, Paris. (Inv AM1984-632). Donation Louise et Michel Leiris, 1984.

**OPP.32:101**; PP.32:053a; GP.96:192p;  
LO.18\*:134p; PA.17a\*:75





**Visage de profil.** Paris. 4-July/1932. Pen on front page of Max Jacob, Saint Matorel. 27,2 x 23,5 cm. Sotheby's. #132, PF1223, 03/28/12.

**OPP.32:188**

**Femme nue couchée aux fleurs (Marie-Thérèse).** Boisgeloup. [Mid-]July/1932. Oil on canvas. [100 x 93] [101,6 x 92,7] 101,3 x 93,3 cm. The Metropolitan Museum of Art, NYC. (Inv 1997.149.4). The Mr. and Mrs. Klaus G. Perls Collection, 1997.

**OPP.32:058**; PP.32:058; Z.VII:407; DT.78:49; FC.08\*:7; GT.10\*:78; JR.62\*:5.4; LO.18\*:138p; MD.02\*:182p; MI.53\*:65; MS.04:32p; NY.56b\*:n/a; NY.57e\*:34; PA.17a:129p; RJ.03:115; TH.75:163; TK.98a\*:75; WW.91:352p







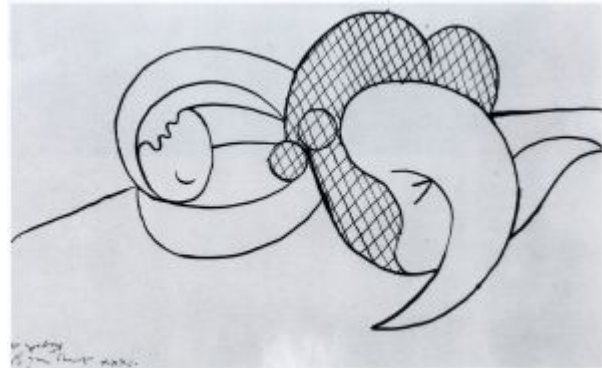
**Nageuse.** Boisgeloup. [Mid-]July~August/1932. Oil on canvas. 22 x 27 cm. Fundación Almine & Bernard Ruiz-Picasso para el Arte. Formerly Christine Ruiz-Picasso Collection. (Inv 12623).

**OPP.32:198**; P.IV:358; LO.18\*:141p;  
PA.17a\*:88; YB.08\*:47

---

**Nu couché.** Boisgeloup. 18-July/1932. India ink on paper. 24,5 x 37 cm. Private collection.

**OPP.32:185**; P.IV:345; PP.32:061;  
Z.VII:396; JB.92:231p





**Nu couché.** Boisgeloup. 18-July/1932. Graphite.  
24,5 x 37 cm. Private collection.

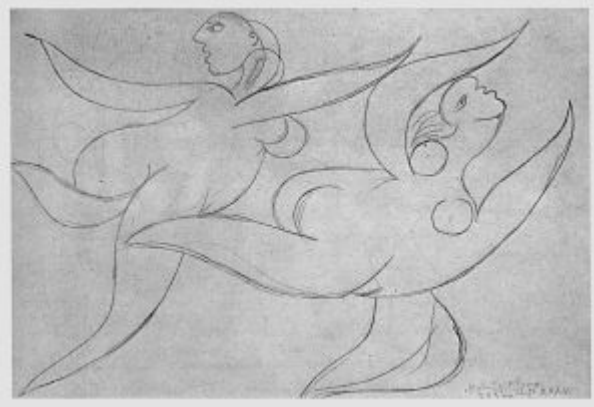
**OPP.32:366**; PP.32:059; Z.VII:401

---

**Nu couché aux fleurs.** Boisgeloup. 18-  
July/1932. India ink & watercolor [Oic].  
24,5 x 37 cm. Private collection.

**OPP.32:367**; PP.32:060; Z.VII:402





**Deux nus.** Boisgeloup. 20-July/1932. Lead pencil on paper. 24,5 x 37 cm. Private collection.

**OPP.32:194**; P.IV:344; PP.32:062; Z.VII:389

---

**Suite Vollard L011 (Flûtiste et trois nus).** Boisgeloup. 21-July/1932. Etching on Montval laid paper. 34 x 44,5 cm. The Museum of Modern Art, NYC. Abby Aldrich Rockefeller Fund. (Inv 185.1949).

**OPP.32:180**; B.I:144; Ba:258.Ba;  
P.IV:353; HB.56:11; LO.18\*:166p;  
LS.75:89; YB.08\*:V.10





**Flûtiste et trois femmes nues.** Boisgeloup. 21-July/1932. Drypoint & scraping on paper. 45,6 x 57,9 cm. Musée Picasso, Paris. Dation 1979.

**OPP.32:330**; Ba:258.1; MPP:2481; LO.18\*:166p

---

**Flûtiste et trois femmes nues.**  
Boisgeloup. 21-July/1932. Drypoint. 29,6 x 36,6 cm. Musée Picasso, Paris.

**OPP.32:408**; Ba:258.2; MPP:1982.70





**Flûtiste.** Boisgeloup. 23-July/1932. Etching. 29,6 x 18,2 cm. Musée Picasso, Paris. Dation 1979.

**OPP.32:139**; B.I:236; Ba:259; MPP:2177; PA.20j\*:139

---

**Joueur de flûte (Étude).** Boisgeloup. 23-July/1932. India ink on paper. 37 x 24,5 cm. Private collection.

**OPP.32:195**; P.IV:354; PP.32:066; Z.VII:393





**Flûtiste et femme nu I.** Boisgeloup. 23-July/1932. Monotype on Vélín Parchemin. 34,6 x 22,3 cm. Musée Picasso, Paris. Dation 1979.

**OPP.32:311**; B.I:237; Ba:445.2; MPP:2179

---

**Flûtiste et femme nu I.** Boisgeloup. 23~24-July/1932. Monotype. 34,6 x 22,5 cm. Musée Picasso, Paris. Dation 1979.

**OPP.32:248**; Ba:445.1; MPP:2178; PA.20j\*:140





**Flûtiste et Femme nue I.** Boisgeloup. 23~24-July/1932. Monotype. 34,6 x 22,5 cm. Musée Picasso, Paris. Dation 1979.

**OPP.32:249**; Ba:446; MPP:2180

---

**Le pot de fleurs sur fond noir.** Boisgeloup. 25-July/1932. Oil on canvas. 65 x 50 [50,2] cm. Christie's. #48, 7974, 06/21/11. Formerly Sotheby's. #45, L07007, 06/19/07; Paloma Ruiz-Picasso Collection.

**OPP.32:126**; PA.17a:132p





**Femme nue dans un fauteuil rouge (Marie-Thérèse).**

Boisgeloup. 27-July//1932. Oil on canvas. 129,9 x 97,2 cm. Tate Modern, London. (Inv N06205). Purchased 1953.

**OPP.32:014**; P.IV:347; PP.32:073; Z.VII:395; AB.05a\*:92; AM.67\*:74; AU.17\*:n/a; BS.12\*:60; FC.08\*:1; GB.87:95; JB.65:89; JL.66\*:159; KZ.50a\*:41; LO.18\*:137p; LO.37c\*:3; LO.45b\*:14; LO.48d\*:4; LO.53c\*:17; LP.99:133p; LS.75:130; NC.10:35; PA.17a\*:79; PA.36e\*:7; PA.36g\*:22; RP.11\*:167p; RP.60\*:129; RP.81:13.2; RP.91:36; RR.09\*:26; RS.88:112p; RU.17:89p; SY.16\*:n/a; UP.00:639; WW.91:355p

**Joueur de flûte (Étude).** Boisgeloup. 27-July/1932. India ink on paper. 37 x 24,5 cm. Private collection.

**OPP.32:196**; P.IV:356; PP.32:067; Z.VII:392





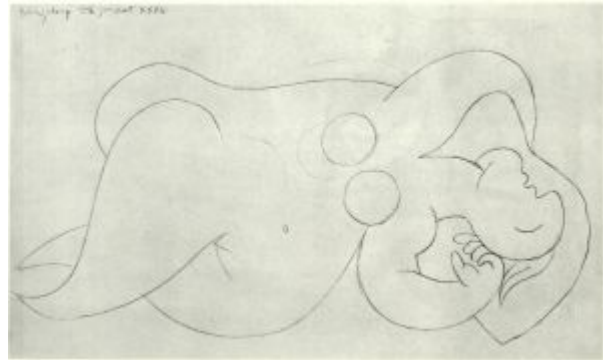


**Femme nue dans un fauteuil rouge (Marie-Thérèse).** Boisgeloup. 27-July//1932. X-radiograph of oil on canvas [Underlayer of *Femme nue dans un fauteuil rouge (Marie-Thérèse)*]. 129,9 x 97,2 cm. Tate Modern, London. (Inv N06205). Purchased 1953.

**OPP.32:407**

**Nu couché.** Boisgeloup. 28-July/1932. Graphite. 24,5 x 37 cm. Private collection.

**OPP.32:365**; PP.32:068; Z.VII:390





**Nu (Études).** Boisgeloup. 30-July/1932. Pencil.  
24,5 x 37 cm. Private collection.

**OPP.32:032**; P.IV:350; PP.32:070; Z.VII:397;  
HC.88:5.33

---

**Nus couchés.** Boisgeloup. 30-July/1932.  
India ink. 24,5 x 37 cm. Private collection.

**OPP.32:033**; P.IV:355; PP.32:071;  
Z.VII:398





**Nu dans un fauteuil rouge (Étude).** Boisgeloup. 30-July/1932.  
Pencil. 37 x 24,5 cm. Private collection.

**OPP.32:034**; P.IV:349; PP.32:072; Z.VII:394; JL.71:61p

---

**Nu endormi (Marie-Thérèse).**  
Boisgeloup. 30-July/1932. Charcoal on  
gessoed canvas. 97 x 130 cm. Private  
collection. Courtesy Gagosian Gallery.

**OPP.32:193**; P.IV:338; CG.12\*:46;  
LO.18\*:167p; PA.17a\*:82; RP.11\*:178-  
179p





**Joueur de flûte (Étude)**. Boisgeloup. 30-July/1932. India ink on paper. 37 x 24,5 cm. Private collection.

**OPP.32:197**; P.IV:357; PP.32:069; Z.VII:391

---

**Nu couché**. Boisgeloup. 4-August/1932. India ink. 24,5 x 37 cm. Private collection.

**OPP.32:369**; PP.32:076; Z.VII:410





**Nus couchés.** Boisgeloup. 4-August/1932. India ink. 24,5 x 37 cm. Private collection.

**OPP.32:370**; PP.32:077; Z.VII:411

---

**Femme nue couchée (Marie-Thérèse).** Boisgeloup. 6-August/1932. Oil on canvas. [24 x 35] 23,8 x 34,9 cm. McNay Art Museum, San Antonio, TX. (Inv 2011.181). Jeanne and Irving Mathews Collection.

**OPP.32:057**; P.IV:346; PP.32:079; LO.18:139p; PA.17a:142p; WW.91:350p





**Femme couchée sur la plage I (Marie-Thérèse).** Boisgeloup. 6-August/1932. Oil on canvas. 27 x 35 cm. Helly Nahmad Collection, Monaco/London. Formerly Paris, Private Collection.

**OPP.32:128**; P.IV:348; IC.05\*:69; PA.17a:142p; WW.91:24p

---

**Nu couché (Marie-Thérèse).** Boisgeloup. 6-August/1932. Oil on canvas [OïC]. 24 x 35 cm. Private collection.

**OPP.32:228**; PP.32:078; Z.VII:409; NY.59c\*:3





**Nu couché (Marie-Thérèse).** Boisgeloup. 7-August/1932. Oil on canvas. 24,1 x 33 cm. Private collection. Formerly Sotheby's. #444, 6489, 11/04/93.

**OPP.32:022**; PP.32:080; Z.VII:408; WW.94\*:110

**Femme assise.** Boisgeloup. 8-August/1932. India ink in sketchbook. 37 x 24,5 cm. Private collection.

**OPP.32:071**; PP.32:087; Z.VIII:3





**Femme assise.** Boisgeloup. 8-August/1932. India ink in sketchbook. 37 x 24,5 cm. Private collection.

**OPP.32:072**; PP.32:088; Z.VIII:4

---

**Femme assise.** Boisgeloup. 8-August/1932. India ink in sketchbook. 37 x 24,5 cm. Private collection.

**OPP.32:073**; P.IV:365; PP.32:089; Z.VIII:5; RU.17:86p







**Femme assise.** Boisgeloup. 8-August/1932. India ink in sketchbook. 37 x 24,5 cm. Private collection.

**OPP.32:074**; P.IV:368; PP.32:090; Z.VIII:6

**Femme assise.** Boisgeloup. 8-August/1932. India ink in sketchbook. 37 x 24,5 cm. Private collection.

**OPP.32:075**; P.IV:369; PP.32:091; Z.VIII:7





**Femme assise.** Boisgeloup. 8-August/1932. India ink in sketchbook. 37 x 24,5 cm. Private collection.

**OPP.32:076**; PP.32:092; Z.VIII:8

**Femme assise.** Boisgeloup. 8-August/1932. India ink in sketchbook. 37 x 24,5 cm. Private collection.

**OPP.32:077**; PP.32:093; Z.VIII:9



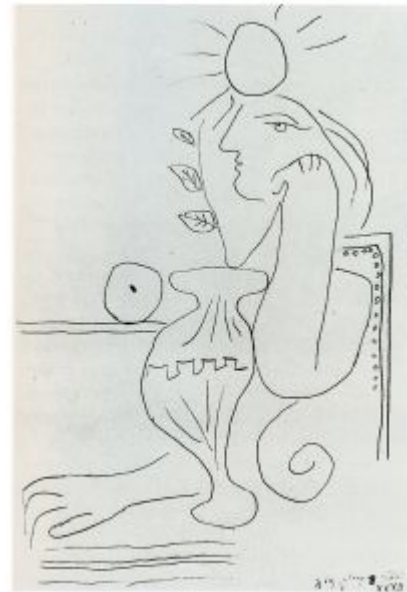


**Femme assise.** Boisgeloup. 8-August/1932. India ink on paper. 37 x 24,5 cm. Private collection.

**OPP.32:199**; P.IV:366; PP.32:085; Z.VIII:1

**Femme assise.** Boisgeloup. 8-August/1932. India ink on paper. 37 x 24,5 cm. Private collection.

**OPP.32:200**; P.IV:367; PP.32:086; Z.VIII:2; WR.96:67p





**Sur la plage.** Boisgeloup. 11-August/1932. India ink in sketchbook. 24,5 x 37 cm. Private collection.

**OPP.32:078**; PP.32:094; Z.VIII:12

---

**Nus couchés.** Boisgeloup. 12-August/1932. India ink on paper. 24,5 x 37 cm. Private collection.

**OPP.32:372**; PP.32:096; Z.VIII:10





**Nu allongé.** Boisgeloup. 12-August/1932. India ink on paper. 24,5 x 37 cm. Private collection.

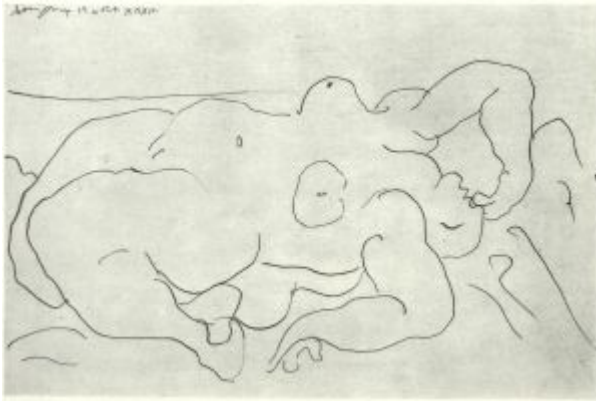
**OPP.32:374**; PP.32:095; Z.VIII:13

---

**Nu allongé.** Boisgeloup. 12-August/1932. India ink on paper. 24,5 x 37 cm. Private collection.

**OPP.32:377**; PP.32:097; Z.VIII:16





**Nu couché.** Boisgeloup. 13-August/1932. India ink on paper. 24,5 x 37 cm. Private collection.

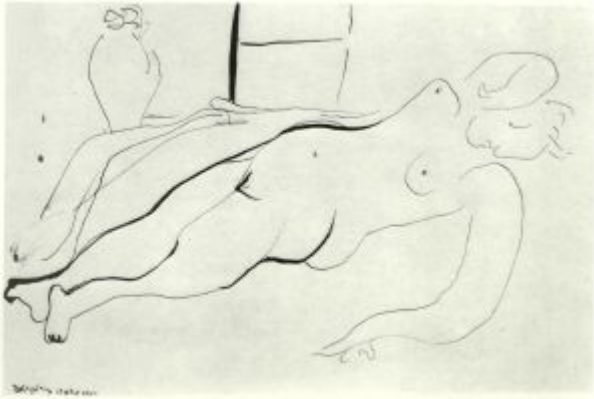
**OPP.32:373**; PP.32:098; Z.VIII:11

---

**Nu couché.** Boisgeloup. 13-August/1932. India ink on paper. 24,5 x 37 cm. Private collection.

**OPP.32:375**; PP.32:099; Z.VIII:14





**Nu couché.** Boisgeloup. 13-August/1932. India ink on paper. 24,5 x 37 cm. Private collection.

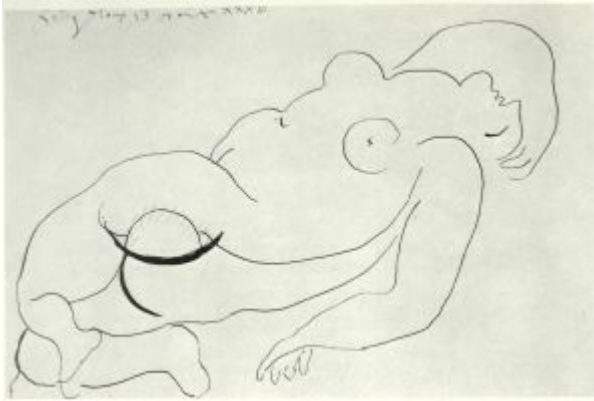
**OPP.32:376**; PP.32:100; Z.VIII:15

---

**Nu couché.** Boisgeloup. 13-August/1932. India ink on paper. 24,5 x 37 cm. Private collection.

**OPP.32:378**; PP.32:101; Z.VIII:17





**Nu couché.** Boisgeloup. 13-August/1932. India ink on paper. 24,5 x 37 cm. Private collection.

**OPP.32:379**; PP.32:102; Z.VIII:18

---

**Nu couché.** Boisgeloup. 13-August/1932. India ink o. India ink on paper. Private collection.

**OPP.32:380**; PP.32:103; Z.VIII:19







**Femme dans un fauteuil (La modèle japonaise).**

Boisgeloup. [8] 14-August/1932. Oil on canvas. 92 x 73 cm. Hilti Art Foundation, Schaan, Liechtenstein. Formerly Christie's. #72, 6677, 02/03/03.

**OPP.32:004**; P.IV:536; PP.32:104; Z.VIII:154; DL.67\*:n/a; JR.07:474; WS.02\*:12

---

**Femme à la montre (Marie-Thérèse).** Boisgeloup. 17-August/1932. Oil on canvas. 130 x 97 cm. Sotheby's. #10, N11349, 11/08/23. Formerly Emily Fisher Landau Collection, NYC.

**OPP.32:152**; P.IV:343; PP.33:110; Z.VIII:132; AS.60:41; BS.67a\*:4; GP.96:188p; MF.06\*:101; PA.17a:146p; PC.14\*:n/a; PC.22\*:n/a; PZ.18\*:n/a





**La sieste (Marie-Thérèse).** Boisgeloup. 18-August/1932. Oil on canvas. 97 x 130 cm. Museo Picasso, Málaga. On temporary loan from Fundación Almine & Bernard Ruiz-Picasso para el Arte.

**OPP.32:112**; P.IV:351; DP.20\*:67; GA.00\*:53; GS.03:2.12; HN.13:121p; JC.01a\*:127; LO.18\*:143p; NC.17\*:75; PA.17a\*:90; RP.11\*:172-173p; RU.17:85p; YB.08\*:49

---

**Personnage courant et étude d'oreille.** Boisgeloup. 22-August/1932. India ink in sketchbook. 24,5 x 37 cm. Private collection.

**OPP.32:079**; P.IV:371; PP.32:105; Z.VIII:22





**Personnage courant.** Boisgeloup. 22-  
August/1932. India ink in sketchbook. 24,5 x 37  
cm. Private collection.

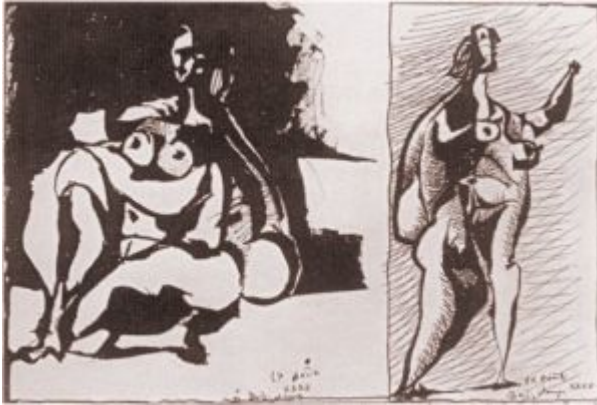
**OPP.32:080**; P.IV:372; PP.32:106; Z.VIII:23

---

**Personnages.** Boisgeloup. 24-  
August/1932. India ink in sketchbook. 24,5  
x 37 cm. Private collection.

**OPP.32:081**; P.IV:373; PP.32:107;  
Z.VIII:24





**Deux études de femmes.** Boisgeloup. 24-August/1932. India ink in sketchbook. 24,5 x 37 cm. Private collection.

**OPP.32:082**; P.IV:374; PP.32:108; Z.VIII:25

**Femme assise au coude appuyé sur le genou.**  
Boisgeloup. 24-August/1932. Oil on canvas. 146 x 114 cm. Private collection.

**OPP.32:096**; LO.18:145p; PA.17a:151p; RP.11\*:185p





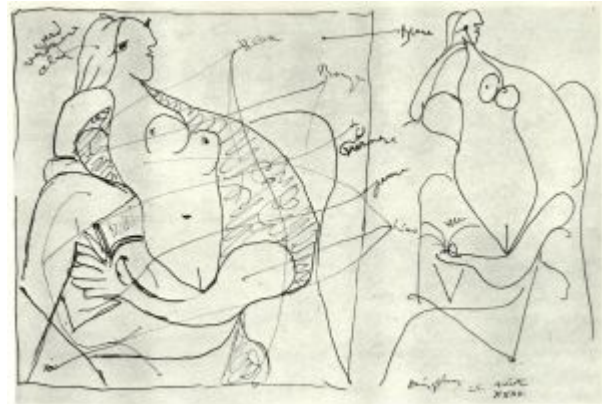
**Nus.** Boisgeloup. 25-August/1932. India ink on paper. 24,5 x 37 cm. Private collection.

**OPP.32:201**; P.IV:370; PP.32:110; Z.VIII:21

---

**Nus assis.** Boisgeloup. 25-August/1932. India ink on paper. 24,5 x 37 cm. Private collection.

**OPP.32:381**; PP.32:109; Z.VIII:20; LO.22:47p





**Joueur de clarinette.** Boisgeloup. 26-  
August/1932. India ink on paper. 24,5 x 37 cm.  
Private collection.

**OPP.32:383**; PP.32:112; Z.VIII:26

---

**Joueur de clarinette.** Boisgeloup. 26-  
August/1932. India ink on paper. 24,5 x 37  
cm. Private collection.

**OPP.32:384**; PP.32:113; Z.VIII:27





**Joueur de clarinette.** Boisgeloup. 26-  
August/1932. India ink on paper. 24,5 x 37 cm.  
Private collection.

**OPP.32:385**; PP.32:114; Z.VIII:28

**Joueur de clarinette.** Boisgeloup. 26-  
August/1932. India ink on paper. 24,5 x 37  
cm. Private collection.

**OPP.32:387**; PP.32:115; Z.VIII:31





**Joueur de clarinette.** Boisgeloup. 28-August/1932. Pen & India ink on paper. 49,2 x 61,5 cm. Christie's. #156, 1571, 11/02/05.

**OPP.32:174**; PP.32:116; Z.VIII:29; GD.77:46p

**Baigneuse jouant avec une balle (Marie-Thérèse).**

Boisgeloup. 30-August/1932. Oil on canvas. 146,2 x 114,6 cm. The Museum of Modern Art, NYC. Partial gift of an anonymous donor & promised gift of Jo Carole and Ronald S. Lauder. Formerly Mr. & Mrs. Victor W. Ganz Collection, NY.

**OPP.32:059**; P.IV:375; PP.32:117; Z.VIII:147; AB.57\*:n/a; BS.55:137; DT.78:48; DW.05:59p; GB.87:123; GC.96:218p; GR.03:61p; IC.05:102p; JC.06:17; JF.94a:53; JL.71:88p; JR.07:n/a; JR.62\*:5.3; LN.80:10; LO.18:147p; MF.97:54p; MI.53\*:63; PA.17a:155p; PD.09:256p; RJ.03:116; RP.11:65p; RP.60\*:131; TC.13:4.24; UP.00:638; WR.12a:101; WR.80\*:295p; WR.96:65p; WW.91:356p







**Nu accroupi et joueur de clarinette.** Boisgeloup.  
31-August/1932. India ink on paper. 24,5 x 37 cm.  
Private collection.

**OPP.32:388**; PP.32:118; Z.VIII:32

---

**Nu couché et joueur de clarinette.**  
Boisgeloup. 31-August/1932. India ink on  
paper. 24,5 x 37 cm. Private collection.

**OPP.32:389**; PP.32:119; Z.VIII:33





**Nu couché et joueur de flûte.** Boisgeloup. 1-September/1932. Oil & India ink. 34,5 x 51 cm. Marina Picasso Collection. Courtesy Galerie Jan Krugier, Geneva.

**OPP.32:091**; PP.32:123; Z.VIII:39; GD.77:47p;  
GL.89\*:3; LO.18\*:189p; MR.03\*:65p;  
PA.17a\*:97; PA.20j\*:135; PI.04:7r

---

**Nu couché et joueuse de flûte.**  
Boisgeloup. 1-September/1932. Oil & India  
ink on paper. 34,5 x 50,5 cm. Private  
collection.

**OPP.32:209**; PP.32:120; Z.VIII:34;  
LO.18\*:188p; PA.17a:158p





**Nu couché et joueur de flûte.** Boisgeloup. 1-September/1932. India ink on paper. 34,5 x 50,5 cm. Private collection.

**OPP.32:390**; PP.32:121; Z.VIII:35

---

**Nu couché et joueur de flûte.**  
Boisgeloup. 1-September/1932. India ink on paper. 24,5 x 37 cm. Private collection.

**OPP.32:391**; PP.32:122; Z.VIII:36





**Trois femmes jouant au ballon.** Boisgeloup.  
[Early-September]/1932. Oil on canvas. 22 x 33  
cm. Marina Picasso Collection. (Inv 12632).  
Courtesy Galerie Jan Krugier, Geneva.

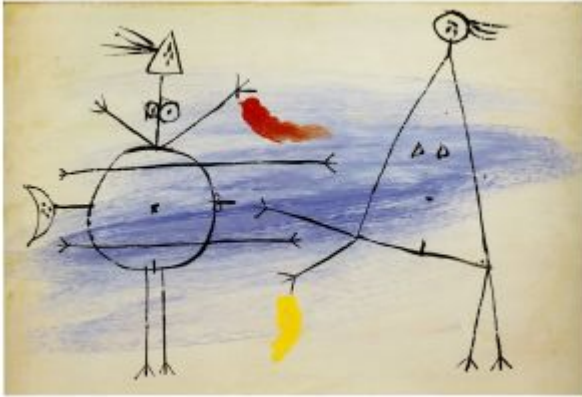
**OPP.32:146**; P.IV:362; PP.32:063; Z.VIII:231;  
JR.85\*:76; MP.81\*:153; UP.00:647

---

**Baigneuses au ballon.** Boisgeloup.  
[Early-September]/1932. Oil on canvas. 27  
x 35 cm. Private collection.

**OPP.32:213**; PA.17a\*:102; RP.11\*:183p





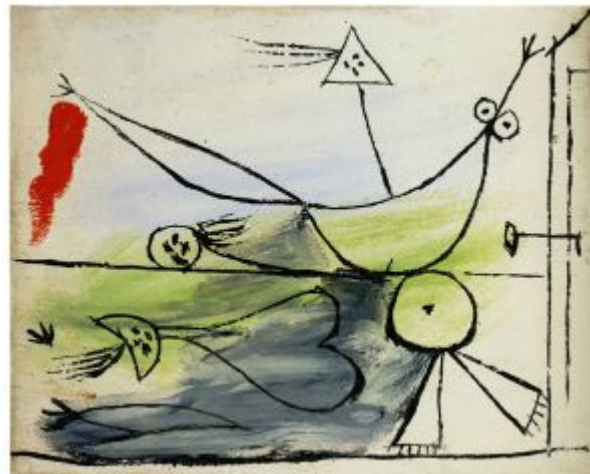
**Baigneuses au bord de la mer.** [Boisgeloup]. [Early-September]/1932. Oil on canvas. 24 x 35 cm. The Picasso Estate. (Inv 12633).

**OPP.32:220**; YB.08\*:52

---

**Femmes jouant au ballon et une cabine.** [Boisgeloup]. [Early-September]/1932. Oil on canvas. 22 x 27 cm. The Picasso Estate. (Inv 12635).

**OPP.32:221**; YB.08\*:53





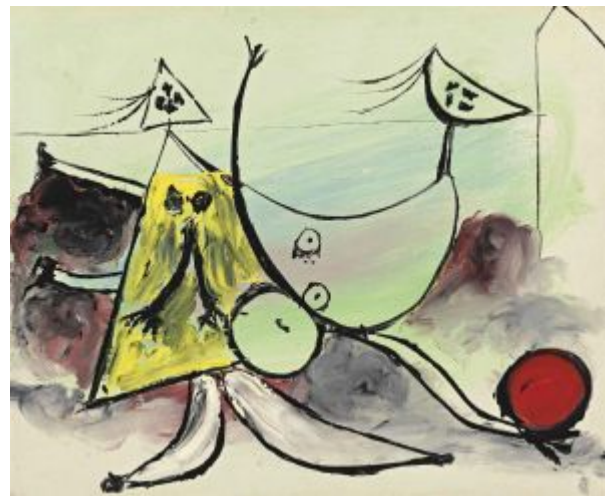
**Femme courant vers un nageur.** Boisgeloup. 4-September/1932. Oil on canvas. 19 x 23 [33] cm. Marina Picasso Collection. (Inv 12627). Courtesy Galerie Jan Krugier, Geneva.

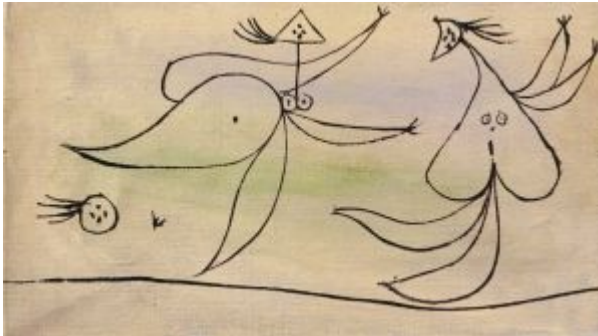
**OPP.32:035**; P.IV:359; PP.32:125; GS.85\*:63; IC.05\*:70; PA.17a:160p

---

**Baigneuses I.** Boisgeloup. 4-September/1932. Oil on canvas. 22 x 27 cm. Christie's. #39, 2594, 11/07/12. Formerly Marina Picasso Collection. (Inv 12628).

**OPP.32:036**; PP.32:126; Z.VIII:152; EC.07:70p; GS.85\*:64; NY.89a\*:22; TK.86\*:PC-15; UW.91\*:41





**Les baigneuses.** [Boisgeloup]. 4-September/1932. Oil on canvas. 19 x 33 cm. Private collection.

**OPP.32:100**; P.IV:364; BA.03a\*:141; LE.07\*:41; MG.03b\*:26

**Les baigneuses.** Boisgeloup. 4-September/1932. Oil on canvas. 19 x 33 cm. Marina Picasso Collection. (Inv 012631). Courtesy Galerie Jan Krugier, Geneva.

**OPP.32:129**; IC.05\*:71; PA.17a:161p; PD.02\*:53





**Deux baigneuses près d'une cabine de bain.**  
Boisgeloup. [4-September]/1932. Oil on canvas.  
22 x 27 cm. Private collection.

**OPP.32:212**; LO.18\*:191p; PA.17a\*:99;  
RP.11\*:182p



**Deux femmes au bord de la mer.**  
Boisgeloup. 4-September/1932. Oil on  
canvas. 22 x 27 cm. Fundación Almine &  
Bernard Ruiz-Picasso para el Arte.

**OPP.32:404**; RU.17\*:172





**Baigneuses.** Boissgeloup. 6-September/1932. Oil on canvas. 27 x 41 cm. Staatsgalerie Stuttgart. (Inv 2781). Erworben mit Lotto-Mitteln 1967.

**OPP.32:037**; PP.32:127; Z.VIII:61; AU.89\*:30; GM.81\*:71; IC.05\*:72; UW.91\*:42

**Femmes jouant au ballon sur la plage.** Boissgeloup. 6-September/1932. Oil on canvas. 19 x 24 cm. Private collection.

**OPP.32:066**; P.IV:360; BA.03a\*:142; LE.07\*:42; LO.18\*:192p; MG.03b\*:24; PA.17a\*:101; TO.99\*:51





**Joueuses de ballon sur la plage.** Boisgeloup. 6-September/1932. Oil on canvas. 27 x 35 cm. The Picasso Estate. (Inv 12640).

**OPP.32:132**; AB.05a\*:44; LO.18\*:193p;  
PA.17a\*:100; YB.08\*:54

---

**Femmes jouant au ballon sur la plage III.** Boisgeloup. 6-September/1932. Oil on canvas. 19 x 24 cm. Private collection.

**OPP.32:236**; CG.04\*:16; MG.04b\*:69





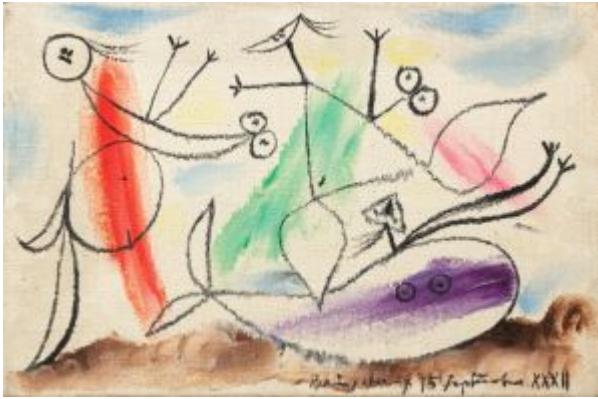
**Baigneuses au ballon.** Boisgeloup. 6-September/1932. Oil on canvas. 27 x 35 cm. Private collection.

**OPP.32:333**; LO.18\*:192p

**Les trois baigneuses.** Boisgeloup. 15-September/1932. Oil on canvas. 27 x 41 cm. Helly Nahmad Collection, Monaco/London. Formerly Sotheby's. #474, NY7649, 05/09/01; Sotheby's. #52, 05/09/89.

**OPP.32:038**; PP.32:128; PP.32:129; CT.23\*:21; HN.13\*:63p; IC.05\*:73; LO.18\*:194p; PA.17a\*:121





**Trois femmes jouant.** Boisgeloup. 15-September/1932. Oil & essence on canvas. 41 x 27 cm. Sotheby's. 2022. Formerly Sotheby's. #8, PF2166, 10/26/21.

**OPP.32:067**; P.IV:363; LE.07\*:43; PA.13b\*:n/a; TO.99\*:52; UP.00:648

**Composition au papillon.** Boisgeloup. 15-September/1932. Cloth, wood, plants, string, drawing pin, butterfly & oil on canvas. 16 x 22 x 2,5 cm. Musée Picasso, Paris. Date acquisition 11/29/1982.

**OPP.32:098**; MPP:1982.169; PP.32:130; WS:116; AB.05a:62; BP.21:59p; BU.22:63p; CG.08:26p; CP.95:151p; GC.96:216p; GP.96:186p; JB.08:137p; JL.71:245p; JM.93:83p; LO.18\*:195p; MC.11:157p; MP.85:267; PA.02f\*:n/a; PA.17a\*:120; PA.21f\*:64; RB.99:54p; RJ.03:69; RP.11:92p; RP.81:13.8; RS.88:186p; RU.17\*:51; UP.00:636; WW.91:360p





**Trois femmes jouant au bord de la mer, cabines de bain.** Boisgeloup. 15-September/1932. Oil on canvas. 27 x 35 cm. Fundación Almine & Bernard Ruiz-Picasso para el Arte. (Inv 12641).

**OPP.32:117**; P.IV:361; GS.03:1.18;  
LO.18\*:194p; MG.03b\*:25; PA.17a\*:119;  
YB.08\*:55

---

**La crucifixion (d'après Grünewald) I.** Boisgeloup. 17-September/1932. India ink on paper. 34,5 x 51,3 cm. Musée Picasso, Paris. Dation 1979.

**OPP.32:133**; MPP:1073; P.IV:377;  
PP.32:131; Z.VIII:49; AB.05a\*:67;  
AG.02\*:n/a; CG.93:203; JB.08:156p;  
JC.01b\*:80; LO.18\*:196p; LU.93:53;  
MA.17\*:101p; NY.06a\*:n/a; PA.17a\*:122;  
SG.96:3.6; SS.76:306; WS.80\*:300p





**La crucifixion (d'après Grünewald).**

Boisgeloup. 17-September/1932. India ink on laid paper. 34,5 x 51,5 cm. Musée Picasso, Paris. Dation 1979.

**OPP.32:148**; MPP:1071; P.IV:379; PP.32:132; Z.VIII:51; AB.05a\*:n/a; AB.05b\*:152; AG.02\*:n/a; BU.22\*:121; JC.01b\*:78; JF.96:121p; LO.18\*:197p; LU.93:56; PA.17a\*:123; PD.06\*:n/a; PD.09:312p; SG.96:3.8; UP.00:654; UW.84:45b; WS.80\*:300p

**La crucifixion (d'après Grünewald).**

Boisgeloup. 17-September/1932. India ink on laid paper. 34,5 x 51,5 cm. Musée Picasso, Paris. Dation 1979.

**OPP.32:161**; MPP:1072; P.IV:380; PP.32:133; Z.VIII:52; AB.05a\*:n/a; AB.05b\*:155; AG.02\*:n/a; BU.22\*:122; JC.01b\*:79; LO.18\*:197p; LU.93:55; NY.06a\*:n/a; PA.17a\*:124; SG.96:3.7; SP.04\*:n/a; WS.80\*:300p





**La crucifixion (d'après Grünewald) VI.**

Boisgeloup. 19-September/1932. Ink & India ink on laid paper. 34,5 x 51,5 cm. Musée Picasso, Paris. Dation 1979.

**OPP.32:054**; MPP:1075; P.IV:384; PP.32:134; Z.VIII:55; AB.05a\*:71; AB.05b\*:157; AG.02\*:n/a; JC.01b\*:82; LO.18\*:199p; LW.15\*:227p; PA.17a\*:127; PA.17b\*:121; PD.09:312p; RJ.03:96; SG.96:3.12; SS.76:305; UP.00:655; VB.99:38p; WS.80\*:301p; WW.91:337p

**La crucifixion (d'après Grünewald) V.**

Boisgeloup. 19-September/1932. Pen & India ink on laid paper. 34,5 x 51,5 cm. Musée Picasso, Paris. Dation 1979.

**OPP.32:136**; MPP:1074; P.IV:383; PP.32:135; AB.05a\*:70; AB.05b\*:153; BA.17\*:137p; BS.55:195p; EC.02:493; GB.87:204; GP.96:181p; HC.88:7.3; JC.01b\*:81; JF.96:121p; JR.07:487p; LO.18\*:199p; LU.93:58; MN.80\*:n/a; PA.17a\*:126; PA.21e\*:237; PA.79a\*:515; RU.17\*:93; SG.96:3.11; SP.04\*:n/a; UW.84\*:45; WS.11:77p; WS.80\*:301p





**La crucifixion (d'après Grünewald) IV.**

Boisgeloup. 19-September/1932. India ink on paper. 34,5 x 51 cm. Musée Picasso, Paris. Dation 1979.

**OPP.32:160**; MPP:1076; P.IV:381; PP.32:136;  
AB.05a\*:68; AB.05b\*:156; AG.02\*:n/a;  
LO.18\*:198p; LU.93:57; PA.17a\*:125;  
RU.17\*:94; SG.96:3.9; SP.04\*:n/a; WS.80\*:300p

---

**Femme veillant une dormeuse.** Paris.  
Fall/1932. Etching on Vélín paper. 26 x 35  
cm. Musée Picasso, Paris. Dation 1979.

**OPP.32:270**; Ba:261.1; MPP:2182;  
PA.17a\*:84







**Le coq.** Boisseloup. Post-[Summer]/1932. Bronze with brown patina [Cast 1952/1955]. 65,5 x 58,2 x 39,5 cm. Tate Modern, London. (Inv N06023). Los Angeles County Museum of Art; Christie's. #13, 2594, 11/07/12.

**OPP.32:092;** P.IV:394; PP.32:082; WS:134.II; AB.46:182p; AB.57\*:n/a; BS.55:435p; BS.67a\*:n/a; CP.95:82p; FM.84:25p; FW.67\*:n/s; GP.96:169p; JC.69:29; LB.58:97p; LO.18\*:140p; MA.86\*:18; MI.53\*:188; MM.67:27p; NY.53b\*:n/a; NY.56b\*:n/a; NY.57b\*:n/a; NY.65d\*:n/a; PA.17a\*:36; PA.44a\*:n/a; PA.50b\*:n/a; PF.10\*:8; RK.69:37; RU.17\*:81; TG.94\*:86; TU.15\*:58; UW.84:103p

---

**Tête de femme.** Paris. Post-[Summer]/1932. Bronze [Cast after *Tête de femme*]. 64,3 x 42,5 x 22 cm. Musée Picasso, Paris.

**OPP.32:162;** MPP:1980.111; PP.32:084; WS:120.II; AB.05a\*:n/a; BU.22:64p





**Femme tenant un livre (Marie-Thérèse).** Boisgeloup~Paris. Fall/1932. Oil on canvas [Overlayer of *Femme tenant un livre (Marie-Thérèse)*]. [130 x 97] 130,5 x 97,8 cm. The Norton Simon Museum, Pasadena, CA. (Inv F.1969.38.10.P). The Norton Simon Foundation.

**OPP.32:019**; PP.32:156; Z.VIII:70; AS.60:40; DK.61\*:26; JL.71:246p; LO.22\*:26p; LO.37c\*:8; NY.36b\*:6; PA.17a:150p; PA.36e\*:n/a; RP.11:27p; TV.06:250p

**Femme veillant une dormeuse.** Paris [Boisgeloup]. Fall/1932. Etching with drypoint on Montval laid paper, edition 50. [18,3 x 29,2] 18,4 x 29,6 cm. Marina Picasso Collection. (Inv 15961). Courtesy Galerie Jan Krugier, Geneva. Also Meyerovich Gallery. 2005.

**OPP.32:093**; B.I:238; Ba:261.B; P.IV:596; GS.85\*:62; LV.06\*:n/a





**Le sauvetage.** Paris. Fall/1932. Pencil on paper. 34,6 x 51,6 cm. David Benrison Fine Art, New York. Formerly Sotheby's. #51, HK0852, 03/29-04/02/19; Christie's. #182, 17192, 06/19/19; Sotheby's. #315, N09741, 11/15/17.

**OPP.32:184**; PP.32:160; Z.VIII:73; RD.00\*:106

---

**Femme veillant une dormeuse.** Paris. Fall/1932. Negative etching. 18,2 x 29,8 cm. Musée Picasso, Paris. Dation 1979.

**OPP.32:253**; Ba:261.3; MPP:2184





**Femme assise et femme étendue.** Paris.  
Fall/1932. Etching on Rives Vélín paper. 26,1 x  
33,4 cm. Musée Picasso, Paris. Dation 1979.

**OPP.32:291**; Ba:261.2; MPP:2183

---

**Femme veillant une dormeuse.** Paris.  
Fall/1932. Etching. 29,9 x 18 cm. Musée  
Picasso, Paris. Dation 1979.

**OPP.32:409**; Ba:261.4; MPP:2185





**Femme tenant un livre (Marie-Thérèse).** Boisgeloup~Paris. Fall/1932. X-ray of oil on canvas [Underlayer of *Femme tenant un livre (Marie-Thérèse)*]. 130,5 x 97,8 cm. The Norton Simon Museum, Pasadena, CA. (Inv F.1969.38.10.P). The Norton Simon Foundation.

**OPP.32:424**; LO.22:40p

**Femme veillant une dormeuse.** Paris. Fall/1932. Etching. 18,3 x 29,8 cm. Sotheby's. #118, L19164, 10/17/19. Formerly Marina Picasso Collection.

**OPP.32:429**; Ba:261.2B





**Joueur de flûte et nu couché.** Boisgeloup. 4-October/1932. Pencil & ink on paper. 35,5 x 54 cm. Museo Picasso, Málaga. Bernard Ruiz-Picasso Collection. Courtesy Fundación Almine & Bernard Ruiz-Picasso para el Arte.

**OPP.32:113**; MPM:1.32A.A; GS.03:1.68A; PA.17a\*:130

---

**Deux nus assis dont l'un jouant de la diaule.** Boisgeloup. 4-October/1932. Oil over India ink drawing. 34,2 x 51,1 cm. Musée Picasso, Paris. Dation 1979.

**OPP.32:147**; MPP:1077; PP.32:140; Z.VIII:43; LO.18\*:200p; PA.20j:20p; RU.17\*:171; SD.05\*:n/a; SP.04\*:n/a; TK.04\*:n/a; UP.00:649





**La crucifixion (d'après Grünewald).**

Boisgeloup. 4-October/1932. Pen & India ink on paper. 34 x 51 cm. Musée Picasso, Paris. Dation 1979.

**OPP.32:149**; MPP:1079; P.IV:378; PP.32:137; Z.VIII:50; AB.05a\*:n/a; AG.02\*:n/a; BA.17\*:139p; GP.96:184p; JC.01b\*:84; JF.96:121p; LO.18\*:201p; LW.15\*:226p; MN.80\*:n/a; NY.06a\*:n/a; PA.17a\*:132; PA.17b\*:123; PA.79a\*:516; PD.09:312p; SG.96:3.18; SP.04\*:n/a; UP.00:656; WS.80\*:301p

**La crucifixion (d'après Grünewald).**

Boisgeloup. 4-October/1932. Pen & India ink on paper. 34 x 51 cm. Musée Picasso, Paris. Dation 1979.

**OPP.32:159**; MPP:1078; P.IV:382; PP.32:138; Z.VIII:56; AB.05a\*:n/a; AB.05b\*:154; BA.17\*:138p; JC.01b\*:83; LO.18\*:201p; MN.80\*:n/a; PA.17a\*:131; PA.17b\*:122; PA.79a\*:517; SG.96:3.17; SP.04\*:n/a; WS.80\*:301p





**Joueur de flûte et nu accroupi.** Boisgeloup. 4-October/1932. India ink on paper. 34,5 x 50,5 cm. Private collection.

**OPP.32:392**; PP.32:139; Z.VIII:37

---

**Joueur de flûte et nu couché.**

Boisgeloup. 6-October/1932. Pencil & charcoal on paper. 23 x 29 cm. Museo Picasso, Málaga. Gift of Christine Ruiz-Picasso.

**OPP.32:115**; MPM:1.33.A; PP.32:141; Z.VIII:41; GS.03:1.69; NC.17\*:76; PA.17a:182p







**La crucifixion (d'après Grünewald).**

Boisgeloup. 7-October/1932. Pen & India ink on paper. 34 x 51 cm. Musée Picasso, Paris. Dation 1979.

**OPP.32:135**; MPP:1082; P.IV:387; PP.32:144;  
 AB.05a\*:69; BA.17\*:140p; BU.22:60p;  
 GB.87:200; JC.01b\*:87; LO.18\*:202p;  
 LW.15\*:227p; ME.82a\*:55; MN.80\*:n/a;  
 PA.02f\*:n/a; PA.17a\*:135; PA.79a\*:518;  
 PP.19:72p; RU.17\*:96; SG.96:3.22; SP.04\*:n/a;  
 UP.00:659; WS.80\*:302p

**La crucifixion (d'après Grünewald).**

Boisgeloup. 7-October/1932. Pen & India ink on paper. 34,5 x 51 cm. Musée Picasso, Paris. Dation 1979.

**OPP.32:150**; MPP:1080; P.IV:385;  
 PP.32:143; AB.05a\*:n/a; BA.17\*:141p;  
 JC.01b\*:85; LO.18\*:203p; LW.15\*:226p;  
 MN.80\*:n/a; PA.02f\*:n/a; PA.17a\*:136;  
 PA.17b\*:124; PA.21e\*:238; PA.79a\*:519;  
 PD.09:312p; RJ.03:98; SG.96:3.20;  
 UP.00:657; WS.80\*:302p





**La crucifixion (d'après Grünewald).**

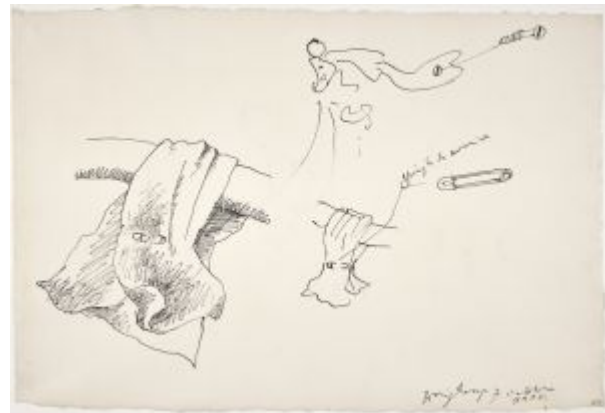
Boisgeloup. 7-October/1932. India ink on paper.  
34 x 51 cm. Musée Picasso, Paris. Dation 1979.

**OPP.32:151**; MPP:1081; P.IV:386; PP.32:146;  
Z.VIII:53; AB.05a\*:n/a; GP.96:183p; JC.01b\*:86;  
JL.71:246p; LO.18\*:202p; PA.17a\*:134;  
PD.06\*:n/a; RU.17\*:95; SG.96:3.21; UP.00:658;  
UW.84:45c; WS.80\*:302p

---

**La crucifixion (d'après Grünewald):  
études de détails.** Boisgeloup. 7-  
October/1933. Pen & India ink on paper.  
[35,2 x 51,2] 34 x 51 cm. Musée Picasso,  
Paris. Dation 1979.

**OPP.32:158**; MPP:1083; P.IV:388;  
PP.32:145; AB.05b\*:159; LO.18\*:202p;  
PA.17a\*:133; SG.96:3.23; WS.80\*:302p





**Oiseau.** Boisgeloup. 7-October/1932. India ink on paper. 34,5 x 50,5 cm. Private collection.

**OPP.32:202**; P.IV:376; PP.32:142; Z.VIII:40

---

**Joueur de clarinette et nu allongé.**

Boisgeloup. 7-October/1932. India ink on paper. 34,5 x 51 cm. Galerie de l'Institut, Paris.

**OPP.32:393**; PP.32:147; Z.VIII:42;  
PA.20j\*:136





**Joueur de clarinette et nu couché.** Boisgeloup. 7-October/1932. India ink on paper. 34,5 x 50,5 cm. Private collection.

**OPP.32:394**; PP.32:148; Z.VIII:44

---

**Joueur de flûte et nu allongé.** Boisgeloup. 8-October/1932. Pencil on inside of envelope. 25,2 x 37,2 cm. Musée Picasso, Paris. Dation 1979.

**OPP.32:140**; MPP:1084bis; PP.32:149; Z.VIII:38; CK.04\*:50; LO.18\*:204p; PA.17a:184p; PD.06\*:255p





**Femme allongée, joueur de flûte.** Boisgeloup. 9-October/1932. Graphite on paper. 24,8 x 33,7 cm. Private collection. Formerly Christie's. #0119, 5485, 12/03/07.

**OPP.32:138**; LO.18\*:205p; PA.17a\*:137

---

**Joueur de flûte et nu couché.** Paris. 13-October/1932. Pen & brush & India ink on paper. 20,6 x 33 cm. Christie's. #1003, 3784, 11/13/15. Formerly Arthur and Anita Kahn Collection, New York.

**OPP.32:144**; PP.32:150; Z.VIII:46





**Joueuse de flûte et nu couché.** Paris. 13-October/1932. Ink on paper. 24,8 x 32,1 cm. Yale University Art Gallery. (Inv 1999.9.14). Gift of Molly & Walter Bareiss, BS, 1940s.

**OPP.32:214**; SF.09:98p

---

**Flûtiste et dormeuse.** Paris. 13-October/1932. Pen & India ink on Japan paper. 32,7 x 25,7 cm. Musée Picasso, Paris. Dation 1979.

**OPP.32:245**; MPP:2353.v





**Le joueur de clarinette.** Paris. 13-October~17-November/1932. Pen & ink, brush & ink & ink wash on paper. 25,9 x 33 cm. Sotheby's. #243, N11158, 05/17/23. Formerly Private collection, Monaco; Christie's. #17, 11792, 06/22/16; Helly Nahmad Collection, Monaco/London; Hammer Galleries. 2012; Sotheby's. #7, PF1014, 06/03/10.

**OPP.32:168**; HN.13\*:65p; LO.18\*:214p; NY.11d\*:n/a; NY.12b\*:n/a; NY.14f\*:57p; NY.21g\*:45; PA.17a\*:139

---

**La crucifixion (d'après Grünewald).**

Paris. 21-October/1932. Pen & India ink on paper. [25,7 x 33,3] 25,5 x 33 cm. Musée Picasso, Paris. Dation 1979.

**OPP.32:157**; MPP:1085; P.IV:389; PP.32:151; Z.VIII:54; AB.05a\*:n/a; GP.96:184p; JC.01b\*:88; LO.18\*:207p; MA.17\*:101p; PA.17a\*:142; RK.69:36; SN.98:83p; UW.84:103p; WS.80\*:302p





**Joueuse de flûte et nu couché.** Paris. 22-October/1932. Pen & India ink on paper. [25,8 x 33,1] 26 x 33,3 cm. Christie's. #39, 16949, 03/28/19. Formerly The Museum of Modern Art, NYC. (Inv 315.1961). Gift of Miss Eve Clendenin.

**OPP.32:143**; PP.32:153; Z.VIII:47; JC.40:160p; JR.62\*:8.30; NY.40a\*:50; NY.62b\*:4p; NY.62h\*:n/a; NY.63k\*:5p; NY.91c\*:11p; OW.64\*:n/a; WR.72\*:136p

---

**Le joueur de flûte.** Paris. 22-October/1932. Pen & black ink, with brush & gray wash & scraping on cream wove paper. 25,9 x 33 cm. The Art Institute of Chicago. (Inv 1992.260). Gift of Mr. & Mrs. Joseph R. Shapiro.

**OPP.32:154**; PP.32:152; Z.VIII:45; CH.68a\*:89; CH.69b\*:124; CH.85b\*:135; CH.92\*:18; NY.61h\*:76; OS.56\*:76; PA.57c\*:n/a







**Joueur de flûte et nu couché.** Boisgeloup. 22-October/1932. India ink on paper. 28 x 33 cm. Private collection.

**OPP.32:382**; PP.32:154; Z.VIII:48; PA.17a:189p

**Marie-Thérèse de profil (Pour l'ami L. Fort).** Paris. 25-October/1932. Watercolor & ink wash on paper. [31,5 x 24,5] 32 x 25,4 cm. Pieter and Olga Dreesmann Collection, London. Formerly Christie's. #169, 15930, 06/21/18; Bonhams. #30, 22394, 05/07/15.

**OPP.32:166**





**Le joueur de flûte.** Paris. 26-October/1932. Pen & ink, brush & ink & ink wash on paper. [25,7 x 33] 25,9 x 33,1 cm. Sotheby's. #111, N09140, 05/08/14. Formerly Sotheby's. #340, N07892, 05/07/03.

**OPP.32:053**; VI.05\*:151

**Femme assise près d'une fenêtre (Marie-Thérèse).** Boisgeloup. [Early] 30-October/1932. Oil on canvas. 146 x 114 cm. Christie's. #15B, 19809, 05/13/21. Formerly Earth Light Foundation, Vaduz; Marina Picasso Collection. (Inv 12646).

**OPP.32:016**; P.IV:302; PP.32:178; FC.08\*:5; HA.16\*:n/a; JR.85\*:72; LO.18\*:215p; MB.84\*:100; MP.81\*:164; MP.83\*:128; PA.17a\*:143; RP.11\*:165p; VE.81\*:210





**Femmes et enfants au bord de la mer (Le sauvetage)**. Paris. November/1932. Oil on canvas. 81 x 100 cm. Sotheby's. #47, N08239, 11/07/06. Formerly Sotheby's. #448, 6489, 11/04/93; Michael Hertz Collection, Bremen.

**OPP.32:043**; P.IV:788; PP.32:162; Z.VIII:63; AH.13:43; AM.67\*:75; BM.77\*:1; GC.96:216-217p; HH.68\*:40; HU.68\*:43; JL.66\*:161; KS.62:33; LO.18:223p; MJ.55\*:74; MU.55\*:70; PA.17a:201p; PC.66:39p; RP.60\*:130; UP.00:651; UW.91\*:46; VI.62\*:140; VI.68b\*:40

---

**Jeu de plage et sauvetage (Le sauvetage)**. Paris. November/1932. Oil on canvas. 95,2 x 130 cm. Private collection. Formerly Sotheby's. #24, N09139, 05/07/14.

**OPP.32:055**; PP.32:163; Z.VIII:64; BS.66a\*:45; IC.05:112p; LO.18:231p; PA.17a\*:152; TG.94\*:97; WW.91:346p; YB.99\*:74





**Jeux au bord de la mer: baigneuses.** Paris. [Late-]Fall/1932. Etching, tinted. 16,4 x 12 cm. Musée Picasso, Paris. Dation 1979.

**OPP.32:294**; Ba:262.03; MPP:2188

**Jeux au bord de la mer: baigneuses.** Paris. [Late-]Fall/1932. Etching, tinted. 16,3 x 11,7 cm. Musée Picasso, Paris. Dation 1979.

**OPP.32:295**; Ba:262.04; MPP:2189





**Jeux au bord de la mer: baigneuses.** Paris. [Late-]Fall/1932. Etching, tinted. 16,3 x 11,7 cm. Musée Picasso, Paris. Dation 1979.

**OPP.32:296**; Ba:262.05; MPP:2190

**Jeux au bord de la mer: baigneuses.** Paris. [Late-]Fall/1932. Etching, tinted. 16,3 x 11,7 cm. Musée Picasso, Paris. Dation 1979.

**OPP.32:297**; Ba:262.07; MPP:2192





**Jeux au bord de la mer: baigneuses.** Paris. [Late-]Fall/1932. Etching. 16,3 x 12,1 cm. Musée Picasso, Paris. Dation 1979.

**OPP.32:298**; Ba:262.09; MPP:2194

**Jeux au bord de la mer: baigneuses.** Paris. [Late-]Fall/1932. Etching, tinted. 19,8 x 13,9 cm. Musée Picasso, Paris. Dation 1979.

**OPP.32:299**; Ba:262.10; MPP:2195





**Jeux au bord de la mer: baigneuses.** Paris. [Late-]Fall/1932. Etching. 23,6 x 16 cm. Musée Picasso, Paris. Dation 1979.

**OPP.32:300**; Ba:262.11; MPP:2196

**Jeux au bord de la mer: baigneuses.** Paris. [Late-]Fall/1932. Etching on Vergé paper. 22,3 x 15,8 cm. Musée Picasso, Paris. Dation 1979.

**OPP.32:301**; Ba:262.12; MPP:2197





**Jeux au bord de la mer: baigneuses.** Paris. [Late-]Fall/1932.  
Etching on Vergé paper. 21,8 x 15,7 cm. Musée Picasso, Paris.  
Dation 1979.

**OPP.32:302;** Ba:262.13; MPP:2198

**Nu de dos.** Paris. [15-November/1932].  
Etching. 11,4 x 10,4 cm. Private collection.

**OPP.32:203;** Ba:263.B; P.IV:395







**Marie-Thérèse pensive.** Paris. 15-November/1932. Oil on wood (cupboard door). 63,8 x 47,2 cm. Private collection.

**OPP.32:206**; CG.12\*:43; LO.18\*:216p; PA.17a\*:145; RP.11\*:163p

**Nu de dos auréolé de rayons de lumière.** Paris. 15-November/1932. Etching. 11,5 x 10,3 cm. Musée Picasso, Paris. Dation 1979.

**OPP.32:410**; Ba:263.1; MPP:2200





**Le sauvetage.** Paris. 20-November/1932. Oil on canvas. [35 x 27] 35,5 x 27,5 cm. Grace, Sean, Lauren and David Carpenter Collection. Formerly Sotheby's. #33, 6/26/95.

**OPP.32:024**; P.IV:397; PP.32:156a; Z.VIII:68; BS.55:136; GB.87:185; IC.05:118p; JR.21:7p; LO.18\*:208p

---

**Nageuse.** Paris. 21-November/1932. Oil on canvas. 97 x 130 cm. Marina Picasso Collection. (Inv 12647). Courtesy Galerie Jan Krugier, Geneva.

**OPP.32:131**; P.IV:396; IC.05\*:74; KB.99\*:15; LO.18\*:168p; PA.17a\*:55; PD.02\*:56





**Le viol I.** Paris. 21-November/1932. Drypoint & etching. 12,2 x 9,1 cm. Museo Picasso, Málaga. On temporary loan from Fundación Almine & Bernard Ruiz-Picasso para el Arte. Also Sotheby's. #70, N09332, 05/01-02/15.

**OPP.32:225**; B.I:239; Ba:264.Ba; DP.20\*:68



**Le viol I.** Paris. 21-November/1932. Drypoint & etching. 12,2 x 9 cm. Musée Picasso, Paris. Dation 1979.

**OPP.32:232**; Ba:264; MPP:2201; PA.07a\*:177p



**Le viol.** Paris. 21-November/1932. Drypoint on Whatman paper. 12,3 x 9,1 cm. Musée Picasso, Paris. Dation 1979.

**OPP.32:316**; Ba:264.1; MPP:2202

---

**Le viol.** Paris. 21-November/1932. Drypoint. 17,4 x 12,4 cm. Musée Picasso, Paris. Dation 1979.

**OPP.32:318**; Ba:264.2; MPP:2203





**Le viol.** Paris. 21-November/1932. Drypoint. 12,5 x 9,5 cm. Sotheby's. #117, L19164, 10/17/23. Formerly Marina Picasso Collection.

**OPP.32:428**; Ba:264.Aa

**La plage III.** Paris. 22-November/1932. Etching. 15,5 x 11,5 [15,8 x 11,8] cm. Museo Picasso, Málaga. Gift of Christine Ruiz-Picasso. Also Museu Picasso, Barcelona; Bibliothèque Nationale, Paris.

**OPP.32:049**; B.I:240; Ba:267.B; MPB:112.657; MPM:1.87; DP.20\*:69; MS.04\*:n/a; TO.99\*:53; UW.91\*:43





**La plage III.** Paris. 22-November/1932. Etching. 15,5 x 11,5 [15,8 x 11,8] cm. Sotheby's. #129, N08544, 04/20/09.

**OPP.32:172**; Ba:267.A

**Baigneuses sur la plage III.** Paris. 22-November/1932. Etching. 15,7 x 11,8 cm. Musée Picasso, Paris. Dation 1979.

**OPP.32:267**; Ba:267.2; MPP:2210; PA.79a\*:n/a





**Baigneuses sur la plage I.** Paris. 22-November/1932. Etching on Whatman paper. 17,3 x 10,2 cm. Musée Picasso, Paris. Dation 1979.

**OPP.32:271**; Ba:265; MPP:2205; LO.18:219p; PA.17a\*:150

**Baigneuses sur la plage II.** Paris. 22-November/1932. Etching on Whatman paper. 17,4 x 12,7 cm. Musée Picasso, Paris. Dation 1979.

**OPP.32:272**; Ba:266.1; MPP:2206; LO.18:219p





**Baigneuses sur la plage III.** Paris. 22-November/1932.  
Etching on Vélin paper. 23,8 x 17,6 cm. Musée Picasso, Paris.  
Dation 1979.

**OPP.32:273**; Ba:267.7; MPP:2215; PA.79a\*:n/a

**Baigneuse sur la plage II.** Paris. 22-November/1932.  
Etching on Vergé Arches paper. 25,6 x 17,5 cm. Musée  
Picasso, Paris. Dation 1979.

**OPP.32:277**; Ba:266.3; MPP:2208







**Baigneuse sur la plage II.** Paris. 22-November/1932. Etching, tinted. 16,4 x 11,1 cm. Musée Picasso, Paris. Dation 1979.

**OPP.32:307**; Ba:266.2; MPP:2207

**Baigneuse sur la plage III.** Paris. 22-November/1932. Etching, tinted. 20,1 x 12,2 cm. Musée Picasso, Paris. Dation 1979.

**OPP.32:308**; Ba:267.8; MPP:2216; PA.79a\*:n/a





**Baigneuses sur la plage III.** Paris. 22-  
November/1932. Etching on Whatman Vélín paper. 19,5  
x 17,5 cm. Musée Picasso, Paris. Dation 1979.

**OPP.32:319**; Ba:267.1; MPP:2209; LO.18:219p;  
PA.17a\*:149; PA.79a\*:n/a

**Baigneuse sur la plage III.** Paris. 22-November/1932.  
Etching, tinted. 16,4 x 12 cm. Musée Picasso, Paris. Dation  
1979.

**OPP.32:323**; Ba:267.6; MPP:2214; PA.79a\*:n/a





**Baigneuses sur la plage III.** Paris. 22-November/1932.  
Etching. 15,6 x 11,8 cm. Musée Picasso, Paris. Dation 1979.

**OPP.32:411**; Ba:267.3; MPP:2211; PA.79a\*:n/a

---

**Baigneuses sur la plage III.** Paris. 22-November/1932.  
Etching. 15,5 x 11,8 cm. Musée Picasso, Paris. Dation 1979.

**OPP.32:412**; Ba:267.4; MPP:2212; PA.79a\*:n/a





**>Baigneuses sur la plage III.** Paris. 22-November/1932.  
Etching. 15,4 x 11,5 cm. Musée Picasso, Paris. Dation 1979.

**OPP.32:413**; Ba:267.5; MPP:2213; PA.79a\*:n/a

**Baigneuses sur la plage III.** Paris. 22-November/1932.  
Etching. 15,6 x 11,8 cm. Sotheby's. #124, L19164,  
10/17/19. Formerly Marina Picasso Collection.

**OPP.32:432**; Ba:267.Ab





**Sur la plage: trois figures I (Anatole Jakovski, 23 Gravures)**. Paris. 23-November/1932. Etching. 12,5 x 9,2 cm. Scottish National Gallery of Modern Art, Edinburgh. (Inv A. 35/2/RPL 1/0046). Purchased with assistance from the National Heritage Memorial Fund and The Art Fund 1994. Also Bibliothèque Nationale de France, Paris.

**OPP.32:041**; B.I:241; Ba:268.B; GC:25; ED.07\*:19; IC.05\*:75; PA.19e:24p; UW.91\*:44

---

**Sur la plage: trois baigneuses**. Paris. 23-November/1932. Etching. 12,6 x 9,2 cm. Musée Picasso, Paris. Dation 1979.

**OPP.32:268**; Ba:268.2; MPP:2218





**Sur la plage: la noyée.** Paris. 23-November/1932. Etching on Whatman paper. 17,5 x 12,6 cm. Musée Picasso, Paris. Dation 1979.

**OPP.32:274**; Ba:269; MPP:2220; PA.17a\*:151

**Sur la plage: trois baigneuses.** Paris. 23-November/1932. Etching. 12,6 x 9,2 cm. Musée Picasso, Paris. Dation 1979.

**OPP.32:276**; Ba:268.1; MPP:2217; LO.18:220p





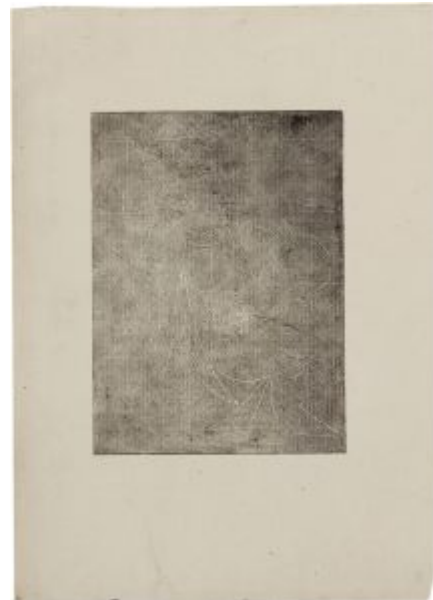
**Sur la plage. Trois baigneuses.** Paris. 23-November/1932.  
Etching. 12,5 x 9,2 cm. Musée Picasso, Paris. Dation 1979.

**OPP.32:414**; Ba:268.3; MPP:2219

---

**Sur la plage: trois baigneuses.** Paris. 23-  
November/1932. Etching. 12,7 x 9,5 cm. Sotheby's. #120,  
L19164, 10/17/19. Formerly Marina Picasso Collection.

**OPP.32:430**; Ba:268.Ab





**Femmes au bord de la mer.** Paris. 24-November/1932. Brush, India ink & ink wash on paper. 24,8 x 34,6 cm. Galerie Ronny van de Velde, Antwerpen. 2005. Formerly Sotheby's. #354, N07991, 05/06/04.

**OPP.32:089**; PP.32:157; Z.VIII:57

---

**Femmes jouant au bord de la mer.**

Paris. 25-November/1932. Pen & brush & ink & wash on paper. [24,3 x 34] [25 x 35] 25 x 34,5 cm. Sotheby's. #32, L13006, 06/19/13. Formerly Christie's. #449, 9250, 11/09/99.

**OPP.32:042**; PP.32:159; Z.VIII:59;  
FZ.42\*:n/a; LO.34b\*:n/a; LO.35a\*:n/a;  
LO.45e\*:12; LT.37\*:n/a; PA.86b\*:82p;  
PA.88d\*:n/a; PA.91c\*:n/a; UW.91\*:45







**Femmes au bord de la mer.** Paris. 25-  
November/1932. India ink on paper. 25 x 35 cm.  
Tony and Gail Ganz Collection, Los Angeles.

**OPP.32:226**; PP.32:158; Z.VIII:58; JR.21:8p

---

**Femme sur le dos.** Paris. [End-  
November]/1932. Oil on canvas. 97 x 130  
cm. Private collection.

**OPP.32:422**; PA.17a:200p





**Baigneuses.** Paris. 28-November/1932. Oil on canvas [OIC]. 81 x 100 cm. Galeria Arts Moderna, Basel.

**OPP.32:173**; P.IV:402; PP.32:161; Z.VIII:62; AB.39a\*:254; AB.46:177p; GB.87:124; JL.71:87p; PD.65:150p

**La baignade.** Paris. 29-November/1932. Etching. 23,2 x 19,5 [19,1] cm. Museu Picasso, Barcelona. Also Museo Picasso, Málaga. On temporary loan from Fundación Almine & Bernard Ruiz-Picasso para el Arte.

**OPP.32:068**; B.I:242; Ba:270.B; MPB:112.660; DP.20\*:70; MS.04\*:n/a; TO.99\*:54





**Femmes jouant au ballon au bord de la mer: baigneuses.**  
Paris. 29-November/1932. Etching. 16,7 x 13 cm. Musée  
Picasso, Paris. Dation 1979.

**OPP.32:222**; Ba:262.02; MPP:2187; PA.17a\*:155; YB.08\*:56

**Femmes jouant au ballon au bord de la mer:  
baigneuses.** Paris. 29-November/1932. Etching. 16,3 x  
12,1 cm. Musée Picasso, Paris. Dation 1979.

**OPP.32:223**; Ba:262.08; MPP:2193; YB.08\*:57





**Baigneuses.** Paris. 29-November/1932. Etching. 17,4 x 25,5 cm. Musée Picasso, Paris. Dation 1979.

**OPP.32:239**; Ba:282.2; MPP:2276

---

**Jeux au bord de la mer: baigneuses.** Paris. 29-November/1932. Etching on Vergé paper. 23,7 x 17,5 cm. Musée Picasso, Paris. Dation 1979.

**OPP.32:250**; Ba:262.01; MPP:2186





**Jeux au bord de la mer: baigneuses.** Paris. 29-November/1932. Etching on Vergé paper. 16,5 x 12,1 cm. Musée Picasso, Paris. Dation 1979.

**OPP.32:251**; Ba:262.06; MPP:2191

**La plongeuse.** Paris. 29-November/1932. Etching on Vélín Arches paper. 14 x 11,2 cm. Musée Picasso, Paris. Dation 1979.

**OPP.32:257**; Ba:277.07; MPP:2253; PA.79a\*:n/a





**La plongeuse.** Paris. 29-November/1932. Etching. 14 x 11,2 cm. Musée Picasso, Paris. Dation 1979.

**OPP.32:258**; Ba:277.06; MPP:2252; PA.79a\*:n/a

---

**La plongeuse.** Paris. 29-November/1932. Etching on Vélín Arches paper. 14 x 11,2 cm. Musée Picasso, Paris. Dation 1979.

**OPP.32:259**; Ba:277.05; MPP:2251; PA.17a\*:156;  
PA.79a\*:n/a; PP.20\*:310





**La plongeuse.** Paris. 29-November/1932. Etching on Vélín Arches paper. 14 x 11,2 cm. Musée Picasso, Paris. Dation 1979.

**OPP.32:260**; MPP:2254; PA.79a\*:n/a

---

**La plongeuse.** Paris. 29-November/1932. Etching on Vélín Arches paper. 14 x 11,2 cm. Musée Picasso, Paris. Dation 1979.

**OPP.32:261**; Ba:277.08; MPP:2255; PA.79a\*:n/a





**La plongeuse.** Paris. 29-November/1932. Etching on Vélín Arches paper. 14 x 11,2 cm. Musée Picasso, Paris. Dation 1979.

**OPP.32:262**; Ba:277.09; MPP:2256; PA.79a\*:n/a

---

**Baigneuses sur la plage IV.** Paris. 29-November/1932. Etching on Japan paper. 14,1 x 11,4 cm. Musée Picasso, Paris. Dation 1979.

**OPP.32:263**; Ba:281.2; MPP:2273







**La plongeuse.** Paris. 29-November/1932. Etching. 17 x 12,8 cm. Musée Picasso, Paris. Dation 1979.

**OPP.32:279**; Ba:277.01; MPP:2247; LO.18\*:221p;  
PA.79a\*:n/a

---

**La plongeuse.** Paris. 29-November/1932. Etching. 25,5 x 17,6 cm. Musée Picasso, Paris. Dation 1979.

**OPP.32:280**; Ba:277.02; MPP:2248; PA.79a\*:n/a





**La plongeuse.** Paris. 29-November/1932. Etching. 19,4 x 14,8 cm. Musée Picasso, Paris. Dation 1979.

**OPP.32:281**; Ba:277.03; MPP:2249; LO.18\*:221p;  
PA.21f\*:61; PA.79a\*:n/a; RU.17\*:55p

---

**La plongeuse.** Paris. 29-November/1932. Etching on Vélín Arches paper. 32,9 x 21,8 cm. Musée Picasso, Paris. Dation 1979.

**OPP.32:282**; Ba:277.04; MPP:2250; LO.18\*:222p;  
PA.79a\*:n/a





**Baigneuses.** Paris. 29-November/1932. Etching on Japan paper. 16,3 x 12,9 cm. Musée Picasso, Paris. Dation 1979.

**OPP.32:284**; Ba:282.1; MPP:2275

**Baigneuses à la piscine.** Paris. 29-November/1932. Etching on Japan paper. 25,6 x 20,8 cm. Musée Picasso, Paris. Dation 1979.

**OPP.32:320**; Ba:270.1; MPP:2221; PA.17a\*:154





**Baigneuses sur la plage IV.** Paris. 29-November/1932.  
Etching. 16,4 x 12 cm. Musée Picasso, Paris. Dation 1979.

**OPP.32:326**; Ba:281.1; MPP:2272; PA.17a\*:153

---

**Baigneuses sur la plage IV.** Paris. 29-November/1932.  
Etching on Japan paper. 25,5 x 16,5 cm. Musée Picasso, Paris.  
Dation 1979.

**OPP.32:327**; Ba:281.3; MPP:2274





**La plongeuse.** Paris. 29-November/1932. Etching over collage of colored papers. 13,9 x 11,3 cm. Sotheby's. #158, N08986, 05/02/13.

**OPP.32:396;** Ba:277.11

**La plongeuse.** Paris. 29-November/1932. Etching with collage of colored paper and fabric, on wove paper. 14 x 11,5 cm. Christie's. #152, 16388, 10/23-25/18.

**OPP.32:397;** Ba:277.12





**La plongeuse.** Paris. 29-November/1932. Etching with collage of colored papers, on wove paper. 14 x 11,1 cm. Christie's. #153, 16388, 10/23-25/18.

**OPP.32:398;** Ba:277.13

**La plongeuse (Pour Madame Zervos).** Paris. 29-November/1932. Etching on red cloth. 13,7 x 11,1 cm. Christie's. #292, 17163, 04/17-28/19.

**OPP.32:401;** Ba:277.14





**Baigneuses à la piscine.** Paris. 29-November/1932. Etching. 22,6 x 18,6 cm. Musée Picasso, Paris. Dation 1979.

**OPP.32:415**; Ba:270.2; MPP:2222

---

**Baigneuses sur la plage IV.** Paris. 29-November/1932. Etching. 16,6 x 12,7 cm. Sotheby's. #122, L19164, 10/17/19. Formerly Marina Picasso Collection.

**OPP.32:431**; Ba:281





**Baigneuses sur la plage IV.** Paris. 29-November/1932. Etching. 14,2 x 11,3 cm. Sotheby's. #178, L19164, 10/17/19. Formerly Marina Picasso Collection.

**OPP.32:433**; Ba:281.A

---

**La plongeuse.** Paris. 29-November/1932. Etching with collage in brown paper. 14 x 11,1 cm. Christie's. #116, 22104, 11/01-15/23.

**OPP.32:435**; Ba:277.Bc







**Baigneuses.** Paris. 29-November/1932. Etching on paper. 11,2 x 11,3 cm. Museo Picasso, Málaga. Acquisition 2010.

**OPP.32:436;** Ba:282.02B; MPM:3.34; DP.20\*:71

**Le sauvetage.** Paris. December/1932. Pencil on paper. 11,5 x 16 cm. Musée Picasso, Paris. Dation 1979.

**OPP.32:085;** MPP:1086.r; PP.32:164; Z.VIII:65; IC.05\*:79; LO.18:227p; PA.17a\*:172; TK.04\*:n/a; UW.84:10a





**La plongeuse.** Boisgeloup. [December]/1932. Etching with collage of colored papers on wove. 14 x 11,1 cm. Christie's. #111, 1481, 02/08/05.

**OPP.32:090**; B.I:1322; Ba:277.10

---

**Silhouettes.** Paris. December/1932. Lead pencil on paper. 11,5 x 16 cm. Musée Picasso, Paris. Dation 1979.

**OPP.32:156**; MPP:1086.v; PP.32:165; IC.05\*:n/a; TK.04\*:n/a





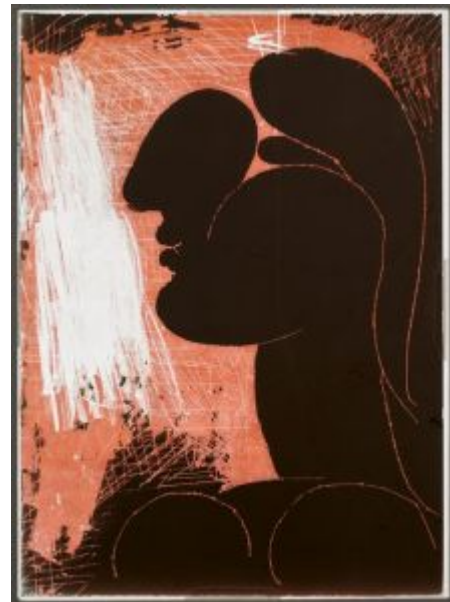
**La grande statue dans l'atelier de l'artiste.** Boisgeloup.  
[Late/1930] December/1932. Plaster. 300 cm. Destroyed. (Black & white photograph on gelatin paper by Brassai).

**OPP.32:181**; MPP:1966.241; PP.30:044; WS:107;  
BA.19b\*:91p; EC.02:508; IC.05:93p; JC.01a:104p; JR.07:444p;  
JR.14\*:174p; LO.18:18p; MG.23a:182p; MS.04\*:n/a;  
MS.04:81p; RB.99:47p; RP.11:80p; RU.17\*:149; WW.94\*:106

---

**Profil de Marie-Thérèse Walter.** Paris.  
December/1932. Engraving on gelatin silver print  
negative. 8,8 x 6,5 cm. Musée Picasso, Paris.

**OPP.32:211**; MPP:1998.324; RP.11:82p





**Profil de Marie-Thérèse I.** Paris. December/1932. Monotype. 14,4 x 11,4 cm. Musée Picasso, Paris. Dation 1979.

**OPP.32:237**; Ba:447.4; MPP:3183

---

**Profil de Marie-Thérèse I.** Paris. December/1932. Monotype. 14,4 x 11,4 cm. Musée Picasso, Paris. Dation 1979.

**OPP.32:238**; Ba:447.3; MPP:3182





**Profil de Marie-Thérèse I.** Paris. December/1932. Monotype. 14,4  
11,5 cm. Musée Picasso, Paris. Dation 1979.

**OPP.32:246**; Ba:447.1; MPP:3180; PA.17a\*:173

---

**Profil de Marie-Thérèse I.** Paris. December/1932.  
Monotype. 18,3 x 11,4 cm. Musée Picasso, Paris. Dation 1979.

**OPP.32:247**; Ba:447.2; MPP:3181





**Les trois Grâces sur la plage.** Paris. December/1932. Etching. 16,2 x 12,2 cm. Musée Picasso, Paris. Dation 1979.

**OPP.32:292**; Ba:280.11; MPP:2270

---

**Les trois Grâces sur la plage.** Paris. December/1932. Etching. 19,5 x 13,7 cm. Musée Picasso, Paris. Dation 1979.

**OPP.32:293**; Ba:280.10; MPP:2269





**Les trois Grâces sur la plage.** Paris. December/1932. Etching, tinted. 16,2 x 12 cm. Musée Picasso, Paris. Dation 1979.

**OPP.32:306**; Ba:280.03; MPP:2262; PA.17a\*:164

---

**Les trois Grâces sur la plage.** Paris. December/1932. Etching on Arches Vergé paper, negative. 26,4 x 17,4 cm. Musée Picasso, Paris. Dation 1979.

**OPP.32:309**; Ba:280.08; MPP:2266





**Trois baigneuses. Les Trois Grâces.** Paris. December/1932. Etching. 14 x 11,2 cm. Musée Picasso, Paris. Dation 1979.

**OPP.32:419**; Ba:280.01; MPP:2260

**Figures surréalistes au bord de la mer.** Paris. [December/1932]~15-January/1933. Etching. 17 x 17,3 cm. Fundació Palau, Caldes d'Estrac. (Inv 0000595). Also Museo Picasso, Málaga. Acquisition 2010; Museu Picasso, Barcelona; Bibliothèque Nationale, Paris.

**OPP.32:048**; B.I:247; Ba:276; MPB:112.656; DP.20\*:75; FC.00\*:54; JL.14\*:63; MS.04\*:n/a; TO.99\*:57; UW.91\*:51





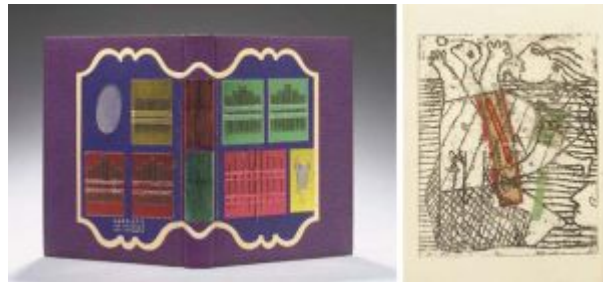


**Baigneuses en maillot de bain par temps nuageux.** Paris. December/1932~15-January/1933. Etching. 17 x 17,3 cm. Musée Picasso, Paris.

**OPP.32:305**; Ba:276.B; MPP:2245

**Joueuses de ballon (Georges Hugnet, Petite anthologie poétique du surréalisme).** Paris. 2-December/1932. Etching & collage. 13,9 x 11,2 cm. Christie's. #185, 5410, 10/21/05.

**OPP.32:118**; B.I:248; Ba:278.Bc; P.IV:442





**Joueuses de ballon (Georges Hugnet, Petite anthologie poétique du surréalisme).** Paris. 2-December/1932. Aquatint & collage. 14 x 11,3 cm. Musée Picasso, Paris. Also Scottish National Gallery of Modern Art. (Inv A. 35/2/RPL 1/0391). Purchased with assistance from the National Heritage Memorial Fund and The Art Fund 1994.

**OPP.32:142;** Ba:278.B; GC:22; MPP:2003.3; ED.07\*:20; PD.06\*:183p



**Joueuses de ballon.** Paris. 2-December/1932. Aquatint & collage [Variant of *Joueuses de ballon* (Georges Hugnet, *Petite anthologie poétique du surréalisme*)]. 19,3 x 14,3 cm. Christie's. #93, 14627, 12/05/16.

**OPP.32:229**



**Joueuses de ballon (Georges Hugnet, Petite anthologie poétique du surréalisme)**. Paris. 2-December/1932. Etching & collage. 19 x 13,8 cm. Christie's. #376, 17875, 07/05/19.

**OPP.32:403**; Ba:278.Bb

**Baigneuse au ballon I**. Paris. 3-December/1932. Etching & aquatint. 11 x 11 cm. Museu Picasso, Barcelona. Also Museo Picasso, Málaga. On temporary loan from Fundación Almine & Bernard Ruiz-Picasso para el Arte.

**OPP.32:069**; B.I:243; Ba:271.B; MPB:112.649; DP.20\*:72; IC.05\*:76; TO.99\*:55; UW.91\*:47





**Baigneuse au ballon I.** Paris. 3-December/1932. Etching. 17,4 x 25,9 cm. Musée Picasso, Paris. Dation 1979.

**OPP.32:224**; Ba:271.2; MPP:2224; YB.08\*:58

---

**Baigneuse au ballon I.** Paris. 3-December/1932. Etching. 11,3 x 16,4 cm. Musée Picasso, Paris. Dation 1979.

**OPP.32:275**; Ba:271.1; MPP:2223





**Baigneuses à la cabine et buste de Marie-Thérèse.** Paris. 3-December/1932. Etching. 16,6 x 11,8 cm. Musée Picasso, Paris. Dation 1979.

**OPP.32:283**; Ba:279.1; MPP:2258

**Baigneuses: la noyade au clair de lune (II).** Paris. 3-December/1932. Etching. 13,9 x 11,3 cm. Musée Picasso, Paris. Dation 1979.

**OPP.32:288**; Ba:275.2; MPP:2242





**Baigneuses: La noyade au clair de lune (I).** Paris. 3-December/1932. Etching. 16,5 x 12 cm. Musée Picasso, Paris. Dation 1979.

**OPP.32:325**; Ba:275.1; MPP:2241; PA.17a\*:159

**Baigneuses à la cabine et buste de Marie-Thérèse.** Paris. 3-December/1932. Etching on Arches Vélín paper. 25,6 x 11,4 cm. Musée Picasso, Paris. Dation 1979.

**OPP.32:328**; Ba:279.2; MPP:2259





**Baigneuses au ballon I.** Paris. 3-December/1932. Etching.  
11,1 x 11,2 cm. Musée Picasso, Paris. Dation 1979.

**OPP.32:416**; Ba:271.3; MPP:2225

**Femmes jouant à la balle sur la plage.**  
Paris. 4-December/1932. Oil on canvas. 81  
x 100 cm. Private collection.

**OPP.32:070**; P.IV:400; CG.12\*:49;  
LE.07\*:44; LO.18\*:225p; PA.17a\*:160;  
TO.99\*:56





**Baigneuses au ballon.** Paris. 4-December/1932.  
Oil on canvas. 81 x 100 cm. Musée Picasso, Paris.  
Dation 1979.

**OPP.32:130**; MPP:143; P.IV:403; PP.32:167;  
HA.02\*:n/a; IC.05\*:77; JR.21:8p; LO.18\*:224p;  
MA.08a\*:n/a; MP.85:121; PA.17b\*:191;  
PA.79a\*:228; TK.04\*:n/a

**Trois baigneuses (Les trois Grâces) (Tristan Tzara, L'Antitête).** Paris. 7-December/1932. Etching. 14,1 x 11,3 cm. Scottish National Gallery of Modern Art, Edinburgh. (Inv A. 42.0432). Bequeathed by Gabrielle Keiller 1995.

**OPP.32:044**; B.I:249; Ba:280.B; GC:21; P.IV:441;  
ED.07\*:21







**Trois baigneuses (Les trois Grâces)**. Paris. 7-December/1932.  
Etching on Japan paper. 14,1 x 11,3 cm. Musée Picasso, Paris.  
Dation 1979.

**OPP.32:134**; Ba:280.04; MPP:2263

**Le peintre et son modèle**. Paris. 7-December1932. Black ink & ink wash on paper. 25 x 35 cm. David Lachenmann Collection, Zürich.

**OPP.32:205**; NY.21g\*:46; RD.08\*:67p;  
RD.11\*:29





**Trois baigneuses (I)**. Paris. 7-December/1932. Etching. 14 x 11,4 cm. Musée Picasso, Paris. Dation 1979.

**OPP.32:264**; Ba:283.1; MPP:2277; PA.17a\*:163

---

**Trois baigneuses (I)**. Paris. 7-December/1932. Negative etching. 14 x 11,4 cm. Musée Picasso, Paris. Dation 1979.

**OPP.32:265**; Ba:283.2; MPP:2278





**Trois baigneuses (Les trois Grâces).** Paris. 7-December/1932. Etching. 14 x 11,3 cm. Musée Picasso, Paris. Dation 1979.

**OPP.32:266**; Ba:280.05; MPP:2264

**Baigneuses au ballon II.** Paris. 7-December/1932. Etching. 16,2 x 11,8 cm. Musée Picasso, Paris. Dation 1979.

**OPP.32:278**; Ba:278; MPP:2257; PA.17a\*:162





**Les trois Grâces sur la plage.** Paris. 7-December/1932. Etching, tinted. 19,5 x 13,7 cm. Musée Picasso, Paris. Dation 1979.

**OPP.32:317**; Ba:280.09; MPP:2268

**Trois baigneuses: Les trois Grâces.** Paris. 7-December/1932. Etching. 16,4 x 11,8 cm. Musée Picasso, Paris. Dation 1979.

**OPP.32:324**; Ba: 280.02; MPP:2261





**Trois baigneuses: Les trois Grâces.** Paris. 7-December/1932. Etching on Arches Vergé paper. 25,4 x 17,9 cm. Musée Picasso, Paris. Dation 1979.

**OPP.32:329**; Ba:280.06; MPP:2265

**Trois baigneuses. Les Trois Grâces.** Paris. 7-December/1932. Etching. 14,1 x 11,4 cm. Musée Picasso, Paris. Dation 1979.

**OPP.32:420**; Ba:280.07; MPP:2267





**Femme étendue.** Paris. 13-December/1932. Brush & ink & wash on paper. 24,8 x 34,9 cm. Sotheby's. #240, N11158, 05/17/23. Formerly Christie's. #1, 1532, 06/24/14.

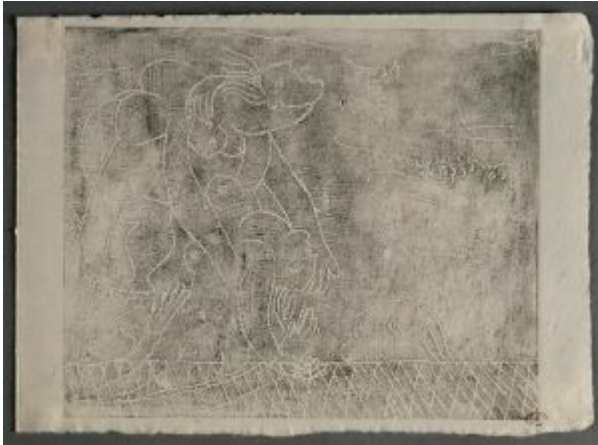
**OPP.32:218**; NY.21g\*:47

---

**Le sauvetage I.** Paris. 17-December/1932. Etching. [15,8] 16 x 19,4 cm. Museo Picasso, Málaga. Gift of Christine Ruiz-Picasso. Also Artcurial. #401, 1765, 11/03/09; Museu Picasso, Barcelona; Bibliothèque Nationale, Paris.

**OPP.32:045**; B.I:244; Ba:272.B; MPB:112.647; MPM:1.89; DP.20\*:73; IC.05\*:78; JC.01a\*:130; LU.93:46; TO.99\*:58; UW.84\*:68; UW.91\*:48; YB.08\*:59





**Le sauvetage de la noyée I.** Paris. 17-December/1932. Etching. 15,8 x 19,4 cm. Musée Picasso, Paris. Dation 1979.

**OPP.32:254**; Ba:272.5; MPP:2230; DP.20:244p; PA.79a\*:n/a

---

**Le sauvetage I.** Paris. 17-December/1932. Etching, positive. 17,3 x 23,5 cm. Musée Picasso, Paris. Dation 1979.

**OPP.32:303**; Ba:272.4; MPP:2229; PA.79a\*:n/a





**Le sauvetage de la noyée I.** Paris. 17-December/1932. Etching. 17,3 x 23,8 cm. Musée Picasso, Paris. Dation 1979.

**OPP.32:312**; Ba:272.3; MPP:2228; PA.79a\*:n/a

---

**Le sauvetage de la noyée I.** Paris. 17-December/1932. Etching. 34,2 x 24 cm. Musée Picasso, Paris. Dation 1979.

**OPP.32:313**; Ba:272.1; MPP:2226; LO.18\*:228p; PA.79a\*:n/a







**Le sauvetage de la noyée I.** Paris. 17-December/1932. Etching. 17,2 x 23,5 cm. Musée Picasso, Paris. Dation 1979.

**OPP.32:321**; Ba:272.2; MPP:2227; DP.20:244p; PA.17a\*:165; PA.79a\*:n/a

---

**Le sauvetage de la noyée I.** Paris. 17-December/1932. Etching. 15,8 x 19,3 cm. Musée Picasso, Paris. Dation 1979.

**OPP.32:417**; Ba:272.6; MPP:2231; PA.79a\*:n/a





**Le sauvetage II.** Paris. 18-December/1932.  
Etching. [16 x 20] 15,8 x 19,9 cm. Bibliothèque  
Nationale de France, Paris.

**OPP.32:046**; B.I:245; Ba:273.Bb1; JC.01a\*:131;  
MS.04\*:n/a; UW.84\*:69; UW.91\*:49; YB.08\*:60

---

**Le sauvetage III.** Paris. 18-  
December/1932. Etching. [20,7 x 23] 20,4  
x 22,8 cm. Museu Picasso, Barcelona. Also  
Bibliothèque Nationale, Paris.

**OPP.32:047**; B.I:246; Ba:274.B;  
MPB:112.659; HN.00\*:42; JC.01a\*:132;  
LV.06\*:n/a; MS.04\*:n/a; TO.99\*:59;  
UW.84\*:70; UW.91\*:50; YB.08\*:61





**Le sauvetage.** Paris. 18-December/1932. Oil on canvas. 130 x 97,5 cm. Fondation Beyeler, Riehen/Basel. (Inv 66.2).

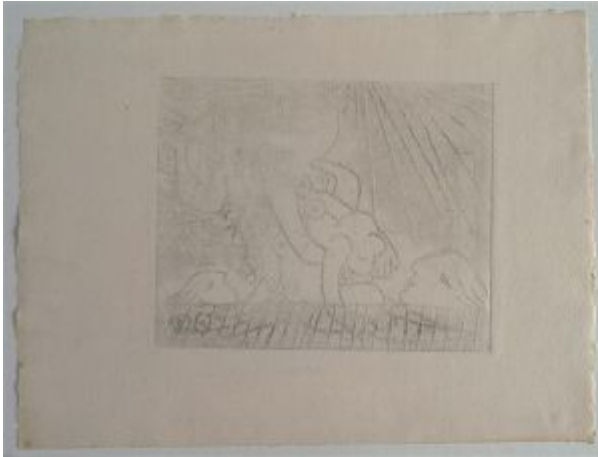
**OPP.32:056**; P.IV:398; PP.32:166; Z.VIII:66; AH.13\*:64; BO.16\*:n/a; DP.20:244p; GC.96:215p; GU.00:56; HN.00\*:41; IC.05\*:80; JF.96:101p; JR.07:n/a; JR.21:n/p; LO.18\*:217p; MS.04:13p; PA.17a\*:147; RP.11\*:189p; UP.00:650; UW.84\*:10; WW.91:347p

---

**Le sauvetage de la noyée II.** Paris. 18-December/1932. Etching. 15,8 x 19,9 cm. Musée Picasso, Paris. Dation 1979.

**OPP.32:255**; Ba:273.2; MPP:2233





**Le sauvetage de la noyée II.** Paris. 18-December/1932. Etching. 15,8 x 19,9 cm. Musée Picasso, Paris. Dation 1979.

**OPP.32:256**; Ba:273.3; MPP:2234

---

**Le sauvetage de la noyée II.** Paris. 18-December/1932. Etching. 25,7 x 34,2 cm. Musée Picasso, Paris. Dation 1979.

**OPP.32:285**; Ba:273.1; MPP:2232;  
LO.18\*:229p





**Le sauvetage de la noyée III.** Paris. 18-December/1932. Etching on Vélín paper. 27,1 x 39,2 cm. Musée Picasso, Paris. Dation 1979.

**OPP.32:286**; Ba:273.5; MPP:2239; PA.79a\*:n/a

---

**Le sauvetage de la noyée II.** Paris. 18-December/1932. Etching on Vélín paper. 15,8 x 19,9 cm. Musée Picasso, Paris. Dation 1979.

**OPP.32:287**; Ba:272.7; MPP:2235





**Le sauvetage de la noyée III.** Paris. 18-December/1932. Etching on Vélin paper. 15,8 x 19,9 cm. Musée Picasso, Paris. Dation 1979.

**OPP.32:289**; Ba:274.3; MPP:2240; PA.79a\*:n/a

---

**Le sauvetage II.** Paris. 18-December/1932. Etching on Vergé paper. 32,5 x 37,3 cm. Musée Picasso, Paris. Dation 1979.

**OPP.32:304**; Ba:273.4; MPP:2236





**Le sauvetage de la noyée III.** Paris. 18-December/1932. Etching on Arches Vergé paper, positive. 25,8 x 35,1 cm. Musée Picasso, Paris. Dation 1979.

**OPP.32:314**; Ba:274.2; MPP:2238; LO.18\*:229p; PA.79a\*:n/a

---

**Le sauvetage de la noyée III.** Paris. 18-December/1932. Etching. 20,3 x 28,8 cm. Musée Picasso, Paris. Dation 1979.

**OPP.32:418**; Ba:274.1; MPP:2237; PA.79a\*:n/a





**Femme nue couchée (Marie-Thérèse).**

Boisgeloup. [Late-December]/1932. Pencil on paper laid down on card. [11 x 20,5] 10,7 x 20,3 cm. Sotheby's. #47, N09727, 05/18/17. Formerly Marina Picasso Collection.

**OPP.32:217**; PP.32:055; Z.VII:400; FB.13\*:n/a

---

**Femme couchée à la mèche blonde.**

Paris. 21-December/1932. Oil on canvas. 130 x 162 cm. Helly Nahmad Collection, Monaco/London. Formerly Sotheby's. #50, L04007, 06/21/04; Christie's #21, 05/10/94.

**OPP.32:003**; P.IV:401; PP.32:168; BS.84c\*:62; BS.86a\*:15; CB.11\*:181p; HN.13\*:127p; LO.18\*:230p; NY.59c\*:4; NY.71b\*:42; PA.17a\*:170; RR.09\*:25







**Acrobates.** Paris. Winter/[1932~1933]. Oil on canvas. 64 x 65 cm. Private collection.

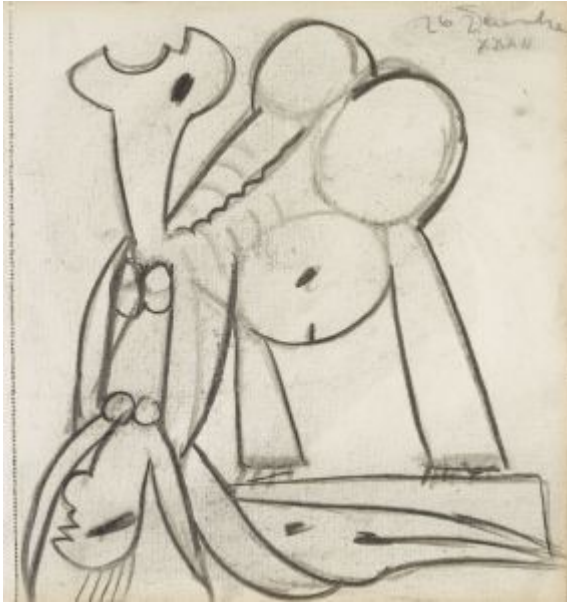
**OPP.32:165**; DO.07\*:197

---

**Le sauvetage (Étude)**. Paris. 26-December/1932. Charcoal on paper. 28 x 26,5 cm. Musée Picasso, Paris. Jacqueline Roque Picasso Collection. Dation 1990.

**OPP.32:105**; MPP:1990.110.18r; PP.32:172; Z.VIII:71; BL.96:40.18r; GR.90\*:107; LO.18\*:175p





**Le sauvetage (Étude)**. Paris. 26-December/1932. Charcoal on paper. 28 x 26,5 cm. Musée Picasso, Paris. Jacqueline Roque Picasso Collection. Dation 1990.

**OPP.32:106**; MPP:1990.110.17r; PP.32:171; Z.VIII:75; AB.69:16a; BL.96:40.17r; GR.90\*:107; LO.18\*:174p



**Le sauvetage (Étude)**. Paris. 26-December/1932. Charcoal on paper. 28 x 26,5 cm. Musée Picasso, Paris. Jacqueline Roque Picasso Collection. Dation 1990.

**OPP.32:107**; MPP:1990.110.16r; P.IV:399; PP.32:170; Z.VIII:74; BL.96:40.16r; GR.90\*:107; LO.18\*:174p



**Le sauvetage (Étude)**. Paris. 26-December/1932. Charcoal on paper. 28 x 26,5 cm. Musée Picasso, Paris. Jacqueline Roque Picasso Collection. Dation 1990.

**OPP.32:108**; MPP:1990.110.15r; PP.32:169; Z.VIII:72; BL.96:40.15r; GR.90\*:107; LO.18\*:174p

**Le peintre et son modèle**. Paris. 30-December/1932. Charcoal on paper. 28 x 26,5 cm. Musée Picasso, Paris. Jacqueline Roque Picasso Collection. Dation 1990.

**OPP.32:102**; MPP:1990.110.21r; P.IV:414; PP.32:175; Z.VIII:79; BL.96:40.21r; GR.90\*:107; LO.18\*:175p





**Le peintre et son modèle.** Paris. 30-December/1932. Charcoal on paper. 28 x 26,5 cm. Musée Picasso, Paris. Jacqueline Roque Picasso Collection. Dation 1990.

**OPP.32:103**; MPP:1990.110.20r; PP.32:174;  
Z.VIII:77; BL.96:40.20r; GR.90\*:107; PA.17a:222p



**Le peintre et son modèle.** Paris. 30-December/1932. Charcoal on paper. 28 x 26,5 cm. Musée Picasso, Paris. Jacqueline Roque Picasso Collection. Dation 1990.

**OPP.32:104**; MPP:1990.110.19r; PP.32:173;  
Z.VIII:78; BL.96:40.19r; GR.90\*:107;  
LO.18\*:175p

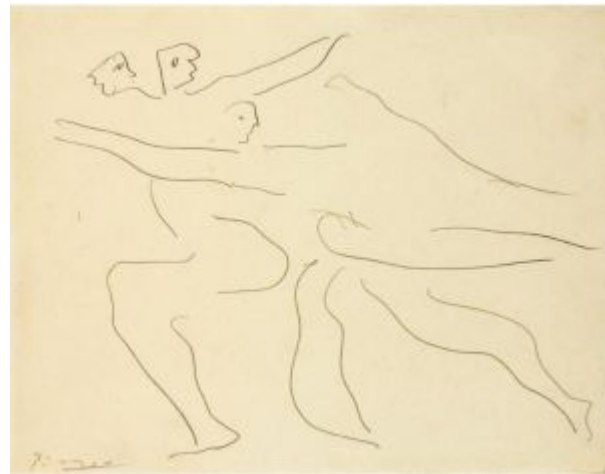


**Études de têtes de taureau.** [Boisgeloup]. [1932]. Pencil & ink on paper. 54 x 35,5 cm. Museo Picasso, Málaga. Bernard Ruiz-Picasso Collection. Courtesy Fundación Almine & Bernard Ruiz-Picasso para el Arte.

**OPP.32:114**; MPM:1.32.R; GS.03:1.68R

**Trois figures.** [Boisgeloup]. 1932. Pencil on paper. 25,5 x 32,5 cm. Sotheby's. #322, N08315, 05/09/07.

**OPP.32:125**; B.I:117p





**La plongeuse.** Paris. 1932. Etching & pasted paper. 13,9 x 11,3 cm. The Museum of Modern Art, NYC. (Inv 8.1945). Purchase Fund.

---

**OPP.32:145**

**Personnage à la cabine effrayé par un animal.** Paris. 1932. Brush & color inks on paper. 8,5 x 18,3 cm. Christie's. #143, 1132, 06/19/13.

---

**OPP.32:171**





**La plongeuse.** Paris. 1932. Etching, with collage additions. 14 x 11,3 cm. The Museum of Modern Art, NYC. (Inv 19.1975). Bequest of Eve Clendenin.

---

**OPP.32:182**

**La plongeuse.** Paris. 1932. Etching, relief printed, with collage. 14 x 11,3 cm. The Museum of Modern Art, NYC. (Inv 623.1983). Gift of Mrs. Alfred H. Barr, Jr.

---

**OPP.32:183**





**Marie-Thérèse et Dolly.** Alfortville. 1932. Photograph. S/U.  
Private collection.

**OPP.32:187**; JP.11a:20p

**Homme à la guitare.** Paris. 1932.  
Watercolor. 14 x 11,5 cm. L'Hôtel des  
Ventes de Genève. #613, 03/12-15/12.  
Formerly Serge Lifar Collection.

**OPP.32:189**







**Les sculptures *Tête de femme (Marie-Thérèse)* et *Œil en cours*.** Boisgeloup. 1932. Vintage photograph. 6,9 x 11,3 cm. Olga Ruiz-Picasso Archives.

**OPP.32:190**; JR.14\*:164p

---

**Femme à la fleur écrivant (Marie-Thérèse).** [Boisgeloup]. [1932]. Charcoal on canvas. 97 x 130 cm. Private collection.

**OPP.32:207**; CG.12\*:47; LO.18\*:165p; PA.17a:74p





**Baigneuses (Jeanne).** [Boisgeloup]. 1932. Pencil on paper. 25,8 x 33 cm. Christie's. #121, 2783, 05/09/13.

**OPP.32:208**

**Les sculptures *Tête de femme (Marie-Thérèse)* et *Œil en plâtre*.** Barcelona. 1932. Vintage photograph. 6,7 x 11,1 cm. Olga Ruiz-Picasso Archives.

**OPP.32:227**; JR.14\*:162p





**Tête avec plume et tartane (V)**. Paris. 1932. Erwinograph.  
27 x 23 cm. Sotheby's. #2, N09647, 10/23-24/2017.

**OPP.32:235**; Ba:572.B5

**Tête avec plume et tartane (II)**. Paris. 1932. Etching.  
51,4 x 32,8 cm. Musée Picasso, Paris. Dation 1979.

**OPP.32:240**; Ba:572.1bis; MPP:2722; BA.18:272p;  
PA.17a\*:83





**Tête avec plume et tarlatane (II)**. Paris. 1932. Etching. 51,4 x 32,8 cm. Musée Picasso, Paris. Dation 1979.

**OPP.32:241**; Ba:572.2bis; MPP:2723; PA.17a\*:85; PP.20\*:309



**Tête avec plume et tarlatane (II)**. Paris. 1932. Etching. 51,4 x 32,8 cm. Musée Picasso, Paris. Dation 1979.

**OPP.32:242**; Ba:572.3bis; MPP:2724



**Tête avec plume et tarlatane (VI)**. Paris. 1932. Etching. 33 x 26 cm. Musée Picasso, Paris. Dation 1979.

**OPP.32:243**; Ba:572.B6; MPP:2725

---

**Profil de Marie-Thérèse Walter (I)**. Paris. 1932. Gelatin silver print. 11,9 x 9 cm. Musée Picasso, Paris. (Inv APPH11665).

**OPP.32:269**





**Nu accroupi et joueur de clarinette.** Boisgeloup. 1932. India ink on paper. 24,5 x 37 cm. Private collection.

**OPP.32:386**; PP.32:111; Z.VIII:30

**Tête avec plume et tarlatane (IV).** Paris. 1932. Erwinograph printed in black with traces of blue ink. 33 x 25,7 cm. Sotheby's. #150, PF1865, 10/18-22/18.

**OPP.32:395**; Ba:572.B4





**Baigneuses sur la plage IV.** Paris. 1932. Etching printed in grey in the manner of a woodcut. 14,2 x 11,3 cm. Sotheby's. #4, N/A, 03/27/19.

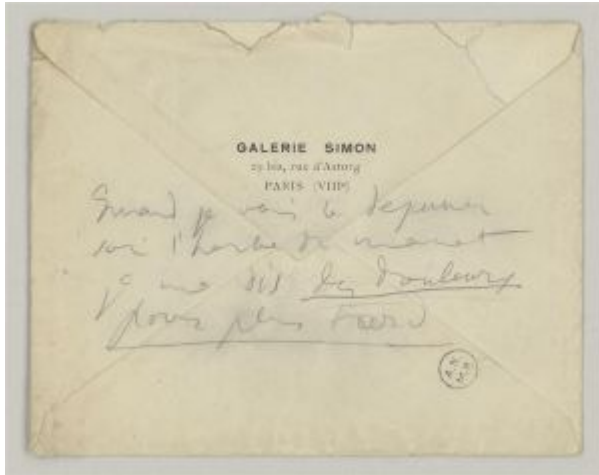
**OPP.32:399;** Ba:281.B

---

**Sur la plage. trois baigneuses.** Paris. 1932. Etching. 12,3 x 9 cm. Sotheby's. #6, N/A, 03/27/19.

**OPP.32:400;** Ba:268.Aa





**Enveloppe manuscrite.** Paris. 1932. Pencil on envelope. 11,5 x 14,5 cm. Musée Picasso, Paris. (Inv 515AP/B/I/I).

**OPP.32:402**; BA.18:285p; PP.20\*:243

**Empreinte d'un napperon.** Boisgeloup. 1932. Plaster. 12,5 cm. Fundación Almine & Bernard Ruiz-Picasso para el Arte.

**OPP.32:406**; RU.17\*:71







**Marie-Thérèse assise par terre.** Paris. 1933. Etching & drypoint. 149 x 96 cm. Private collection. Formerly Dora Maar Collection.

**OPP.32:427**; PA.98d\*:135

**Tête avec plume et tarlatane.** Paris. 1932. Erwinograph. 30,4 x 24,5 cm. Sotheby's. #130, L19164, 17/19. Formerly Marina Picasso Collection.

**OPP.32:434**; Ba:572.4Bis





**Quatre compositions et les versos des cuivres.** Paris. 1932~1933. Etching & drypoint. 14 x 11,3 cm. Musée Picasso, Paris. Dation 1979.

**OPP.32:252**; MPP:2199

---

**Quatre compositions et les versos des cuivres.** Paris. 1932~1933. Burin, etching & scraping. 14,1 x 11,3 cm. Musée Picasso, Paris. Dation 1979.

**OPP.32:315**; MPP:2271





**Chien.** Paris. 1932~1935. India ink on paper. 9,1 x 15,3 cm. Art Gallery Jean Paul Perrier, Barcelona. 2010.

---

**OPP.32:169**

**Chien.** Paris. 1932~1935. India ink on paper. 9,1 x 15,3 cm. Art Gallery Jean Paul Perrier, Barcelona. 2010.

---

**OPP.32:170**

